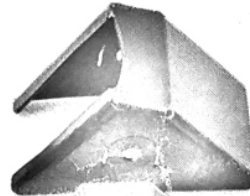
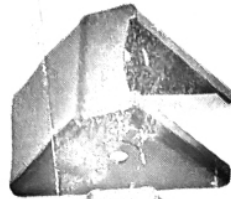
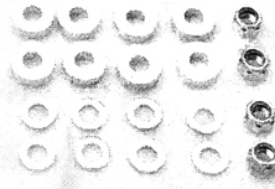
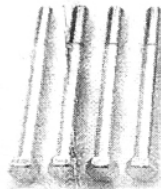
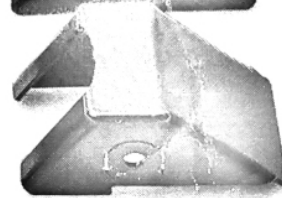
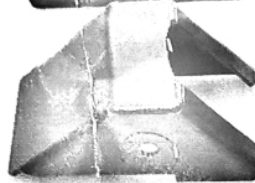


# 2019 Gen 4 jimny radius arm guards

Rear Guards



Front Guards



## To fit

Its best to do 1 guard at a time, remove the original bolt from the jimny radius arm mount, slide the correct guard halfway up and drop between the guard and the original mounting bracket 1x 8mm washer per side, then add 1x m12 washer to the m12 bolt and carefully pass through the guard and mounting bracket. Leave the bolts loose at this stage with the nuts fitted.

So you will have the following in order:-

M12 bolt – M12 washer – Guard – M12 8mm washer – chassis bracket – radius arm bush – chassis bracket – M12 8mm washer – Guard – M12 washer – M12 nyloc nut

Repeat this for the remaining brackets

Lower the car to the ground sitting on its wheels so the bushes are relaxed and torque to 54 ftlb