

PRODUCT SPECIFICATIONS



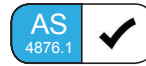
Publication Date: October, 2018

Description:
Toyota HiLux StealthBar

Application:
Toyota HiLux 2015+ Models

Fitting:
Minimum 3 Hours (Non Winch)
Minimum 4 Hours (Winch)
Refer Matrix for Accessory Fitup

Available:
October, 2018



Product Specification

In August 2018 Toyota released the facelift models of their latest generation HiLux, reinvigorating the range with an updated bumper and grille design.

Designed specifically to suit the 2018 HiLux facelift, while also fitting the 2015+ models. SmartBar's new model of Vehicle Frontal Protection System, the StealthBar, perfectly complements the design and shape of the vehicle and has been designed to suit both the pre and post facelift HiLux models (see matrix for full model specific fitment information).

The StealthBar has been engineered to be the lightest and safest VFPS available, offering even more protection and safety to vehicle owners and importantly, pedestrians.

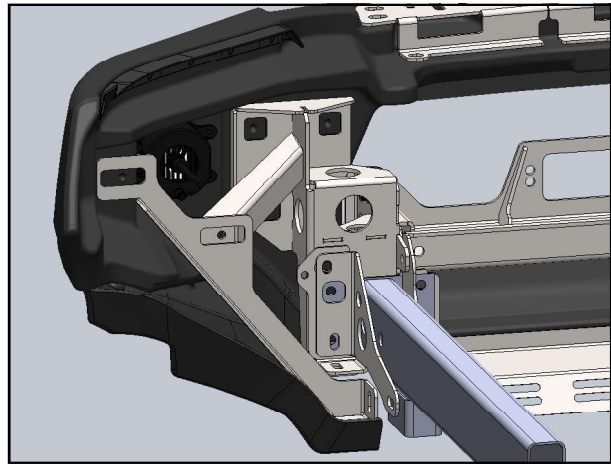
Protection & Styling Characteristics:

- Meets full Australian Standard AS 4876.1-2002. Including 3.2 Road User Protection
- Weight savings provide improved fuel economy and reduced tyre, suspension and brake wear when compared to other alternatives
- Fitted Weight of **28kg for Non Winch**
- Fitted Weight of **36kg for Winch**
- Bar adds 120mm to vehicle length
- 30° approach angle on high ride vehicle
- Air Bag Compatible
- Bumper trim required on 09/15 - 07/18
- Bumper replacement with grille trim on 08/2018+ facelift
- Superior frontal protection, due to the impact absorbing hollow construction
- Antenna mount location on top of the accessory bracket
- UV stabilised polymer for durability and corrosion resistance
- Styled to maintain the Vehicle's aesthetic
- Proudly designed and manufactured in Australia
- Minimal maintenance
- Minimal repair costs after impact
- Manufactured from environmentally friendly, recyclable polyethylene polymer
- Available in Black as standard, other colours available for large order quantities
- Accommodates a large range of spotlights
- Accommodates up to 10,000lb Winch
- Compatible with ARB Under Vehicle Protection
- Compatible with ARB Recovery Points
- Compatible with OE fog lights
- Compatible with SmartBar All in 1 Light
- High Lift Jack point available as an option with winch bars

Chassis Mounts:

The chassis mounts are designed to be easily fitted to the vehicle, reducing fitting time. The single part construction allows for three axis adjustability, to achieve a solid and perfect fit every time.

All brackets have been tested and comply with Vehicle Air Bag compatibility, Winch Maximum Pull Exertion and Australian Safety Standards.



Pedestrian Safety:

SmartBar's have been tested and proven to be less likely to cause serious injury to pedestrians than other alternatives. This is due to the hollow construction which allows the bar to absorb most of the impact along with the unique and specifically designed co-polymer material.



Underwing Panel Kit:

The under wings are designed to provide even more protection to the under body of the Toyota HiLux outside of the chassis rails.

The under wing panels are compatible with the ARB UVP and ARB recovery points.

