

2003 KIA

Sorento

BUZZERS, RELAYS & TIMERS

BUZZERS, RELAYS & TIMERS LOCATION

Component	Component Location
Air Con Relay	In engine room fuse box.
Back Glass Opener Relay	Integral to integrated control module.
Cigar Lighter Relay	Behind left kick panel. See <b>Fig. 3</b> .
Condenser Fan High Relay	In engine room fuse box.
Condenser Fan Low Relay	In engine room fuse box.
Condenser Fan No. 2 Relay	In engine room fuse box.
Door Lock Relay	Integral to integrated control module.
Door Unlock Relay	Integral to integrated control module.
Front Blower Relay	In engine room fuse box.
Front Defroster Relay	Behind left kick panel. See <b>Fig. 2</b> .
Fuel Pump Relay	In engine room fuse box.
Hazard Relay	In relay block.
Headlight Relay (High)	In engine room fuse box.
Headlight Relay (Low)	In engine room fuse box.
High Blower Relay	Behind lower right side of dash. See <b>Fig. 3</b> .
Horn Relay	In engine room fuse box.
Main Relay	In engine room fuse box.
Power Outlet Relay	Behind left kick panel. See <b>Fig. 3</b> .
Power Window Relay	In engine room fuse box.
Rear Defroster Relay	In engine room fuse box.
Seat Warmer Relay (Left)	Integral to integrated control module.
Seat Warmer Relay (Right)	Integral to integrated control module.
Starter Relay	In engine room fuse box.
TCCS Relay	In relay block.
TNS Relay	In engine room fuse box.
Wiper Relay	Integral to integrated control module. See <b>Fig. 3</b> .

CIRCUIT PROTECTION DEVICES

CIRCUIT PROTECTION DEVICES LOCATION

Component	Component Location
Engine Room Fuse Box	At left side of engine compartment.

Relay Block	Behind right end of dash.
-------------	---------------------------

## CONTROL UNITS

### CONTROL UNITS LOCATION

Component	Component Location
ABS Control Unit	At left rear of engine compartment.
Air Bag Control Unit	At rear of center console. See <b>Fig. 3</b> .
Auto Cruise Control Unit	At left rear corner of engine compartment. See <b>Fig. 1</b> .
DRL Unit	Behind left side of dash. See <b>Fig. 2</b> .
EC-AT Control Unit	Behind left kick panel. See <b>Fig. 3</b> .
Engine Control Unit	Behind lower right side of dash. See <b>Fig. 3</b> .
EPS Unit	Behind center of dash.
ETACS	Below center of dash. See <b>Fig. 2</b> .
Flasher Unit	Behind left side of dash. See <b>Fig. 3</b> .
Integrated Control Module	Behind left kick panel. See <b>Fig. 3</b> .
Rear Wiper Control Unit	At lower center of back door. See <b>Fig. 6</b> .
Transfer Case Control Unit	Below front of center console. See <b>Fig. 3</b> .

## MOTORS

### MOTORS LOCATION

Component	Component Location
Back Glass Actuator	At lower center of back door. See <b>Fig. 6</b> .
Blower Motor	Behind right side of dash, on blower unit. See <b>Fig. 3</b> .
Condenser Fan Motor	Behind right side of radiator. See <b>Fig. 1</b> .
Free Running Differential Air Pump	At left front of engine compartment. See <b>Fig. 1</b> .
Front Wiper Motor	On left side of firewall.
Fuel Pump	On top of fuel tank.
Idle Speed Actuator Motor	At right rear of engine compartment. See <b>Fig. 1</b> .
Intake Actuator	Behind right side of dash, on blower unit. See <b>Fig. 3</b> .
Mix Actuator	Behind center of dash, on bottom of HVAC unit. See <b>Fig. 3</b> .
Mode Actuator	Behind center of dash, on bottom of HVAC unit. See <b>Fig. 3</b> .
Rear Wiper Motor	At lower center of back door.
Sun Roof Unit	At front center of roof.
Transfer Solenoid & Motor	At transfer case. See <b>Fig. 1</b> .
Washer Motor	At right front corner of engine compartment.

# SENDING UNITS & SENSORS

## SENDING UNITS & SENSORS LOCATION

Component	Component Location
Airflow Sensor	Right side of engine compartment. See <b>Fig. 1</b> .
Ambient & AQS Sensor	At center front of engine compartment. See <b>Fig. 1</b> .
Auto Light Unit	At top right end of dash. See <b>Fig. 2</b> .
Brake Fluid Level Sensor	On brake master cylinder reservoir assembly. See <b>Fig. 1</b> .
Camshaft Position Sensor	At front of engine. See <b>Fig. 1</b> .
Crankshaft Position Sensor	At front of engine, next to crankshaft sprocket. See <b>Fig. 1</b> .
Driver Track Sensor	Under driver's seat.
Evaporator Core Sensor	Behind center of dash, at center of HVAC unit. See <b>Fig. 3</b> .
Front Impact Sensor (Left)	At left front corner of engine compartment.
Front Impact Sensor (Right)	Behind right side of front bumper.
Fuel Cut Sensor	At right side of engine compartment.
Fuel Tank Pressure Sensor	At top of fuel tank.
Fuel Temperature Sensor	Near top of fuel tank.
Humidity & In-Car Sensor	Behind center of dash. See <b>Fig. 2</b> .
Ignition Failure Sensor	At top rear of engine. See <b>Fig. 1</b> .
Input Speed Sensor	At top of transmission. See <b>Fig. 1</b> .
Knock Sensor	At top rear of engine. See <b>Fig. 1</b> .
MAP Sensor	On intake manifold. See <b>Fig. 1</b> .
Oil Temperature Sensor (Transmission)	At right side of transmission. See <b>Fig. 1</b> .
Output Speed Sensor	At top of transmission. See <b>Fig. 1</b> .
O2 Sensor (Front Left)	On left rear side of engine.
O2 Sensor (Front Right)	On right rear side of engine.
O2 Sensor (Rear Left)	On left rear side of engine.
O2 Sensor (Rear Right)	On right rear side of engine.
Passenger Track Sensor	Under passenger's seat.
Side Impact Sensor (Left)	At base of left "B" pillar. See <b>Fig. 5</b> .
Side Impact Sensor (Right)	At base of right "B" pillar. See <b>Fig. 4</b> .
Speed Sensor	On rear of transmission. See <b>Fig. 1</b> .
Sun Sensor	At top left end of dash. See <b>Fig. 2</b> .
Throttle Position Sensor	On throttle body. See <b>Fig. 1</b> .
Transfer Speed Sensor	At transfer case. See <b>Fig. 1</b> .
Washer Fluid Level Sensor	On washer fluid reservoir.

Water Temperature Sensor	At top front of engine. See <b>Fig. 1</b> .
Wheel Speed Sensor (Front)	On respective front steering knuckle.
Wheel Speed Sensor (Rear)	On respective rear brake backing plate.

## SOLENOID & SOLENOID VALVES

### SOLENOID & SOLENOID VALVES LOCATION

Component	Component Location
EC-AT Solenoid	At top of transmission. See <b>Fig. 1</b> .
EPS Solenoid	At left side of engine compartment. See <b>Fig. 1</b> .
Purge Solenoid Valve	At left side of engine. See <b>Fig. 1</b> .
Purge Vent Solenoid	At right side of transmission.
Variable Intake Solenoid Valve	At left side of engine.

## SWITCHES

### SWITCHES LOCATION

Component	Component Location
Driver Seat Belt Switch	In driver's seat belt buckle.
Inhibitor Switch	At top of transmission. See <b>Fig. 1</b> .
Oil Pressure Switch	At left front of engine. See <b>Fig. 1</b> .
Parking Brake Switch	At base of parking brake lever. See <b>Fig. 3</b> .
Passenger Seat Belt Switch	In passenger's seat belt buckle.
Power Steering Switch	At right front of engine. See <b>Fig. 1</b> .
Stoplight Switch	Above brake pedal, on bracket.
Triple Switch	On top of A/C receiver-drier assembly. See <b>Fig. 1</b> .

## MISCELLANEOUS

### MISCELLANEOUS LOCATION

Component	Component Location
Auto Glass Antenna	Behind right rear quarterpanel. See <b>Fig. 6</b> .
Condenser	At top left of engine. See <b>Fig. 1</b> .
Diagnosis Connector	At left rear of engine compartment. See <b>Fig. 1</b> .
Diode No. 1	Behind left side of dash. See <b>Fig. 3</b> .
Diode No. 2	Behind left end of dash.
ECM Home Link	At front of overhead console. See <b>Fig. 5</b> .
Flasher Unit	Behind left side of dash. See <b>Fig. 3</b> .
Multi-Meter	At front of overhead console.
OBD-II Check	At right of steering column. See <b>Fig. 2</b> .

Connector	
Power Transistor	Behind right side of dash. See <b>Fig. 3</b> .
Resistor	Behind right side of dash, on bottom of blower unit. See <b>Fig. 3</b> .
Transfer Speed Coil	At transfer case.

## CONNECTORS

### CONNECTORS LOCATION

Component	Component Location
X02 (Black, 16 Pin)	At left side of engine compartment, near battery. See <b>Fig. 1</b> .
X03 (Gray, 16 Pin)	At left side of engine compartment, near battery.
X04 (Black, 12 Pin)	At left side of engine compartment, near battery.
X05 (20 Pin)	Behind left side of dash. See <b>Fig. 2</b> .
X06 (Blue, 22 Pin)	Behind left side of dash. See <b>Fig. 2</b> .
X07 (Black, 24 Pin)	Behind left side of dash. See <b>Fig. 2</b> .
X08 (20 Pin)	Behind left side of dash. See <b>Fig. 2</b> .
X09 (21 Pin)	Behind left side of dash. See <b>Fig. 2</b> .
X10 (22 Pin)	Behind right kick panel. See <b>Fig. 3</b> .
X11 (Black, 24 Pin)	Behind right kick panel. See <b>Fig. 3</b> .
X12 (22 Pin)	Behind right kick panel. See <b>Fig. 3</b> .
X13 (22 Pin)	Behind left kick panel. See <b>Fig. 3</b> .
X14 (4 Pin)	Behind left kick panel. See <b>Fig. 3</b> .
X15 (Yellow, 4 Pin)	Behind left kick panel. See <b>Fig. 5</b> .
X16 (20 Pin)	Behind right kick panel. See <b>Fig. 4</b> .
X17 (8 Pin)	Behind right kick panel. See <b>Fig. 3</b> .
X18 (4 Pin)	Behind right kick panel. See <b>Fig. 4</b> .
X19 (Gray, 18 Pin)	Behind left kick panel.
X20 (Black, 21 Pin)	Behind left kick panel.
X21 (Gray, 18 Pin)	Behind right side of dash.
X22 (Black, 21 Pin)	Behind right side of dash.
X23 (20 Pin)	Behind left kick panel.
X24 (Yellow, 4 Pin)	At base of left "A" pillar. See <b>Fig. 5</b> .
X25 (Black, 10 Pin)	At right rear corner of engine compartment. See <b>Fig. 1</b> .
X27 (Blue, 22 Pin)	Behind right kick panel. See <b>Fig. 2</b> .
X28 (18 Pin)	Behind left kick panel. See <b>Fig. 2</b> .
X29 (Black, 22 Pin)	Behind right kick panel. See <b>Fig. 2</b> .
X30 (14 Pin)	At left "B" pillar.
X31 (14 Pin)	At right "B" pillar.

X32 (14 Pin)	Behind left rear quarterpanel. See <b>Fig. 5</b> .
X33 (4 Pin)	At left side of back door. See <b>Fig. 5</b> .
X34 (16 Pin)	At rear of roof. See <b>Fig. 6</b> .
X35 (Gray, 2 Pin)	At left side of engine compartment, near battery.
X36 (Black, 6 Pin)	On right side of steering column.
X37 (Yellow, 14 Pin)	Behind center of dash.
X39 (6 Pin)	Below front of center console.
X40 (14 Pin)	Behind center of dash.
X41 (6 Pin)	Behind lower right side of dash.
X42 (8 Pin)	Behind lower right side of dash.
X44 (Black, 6 Pin)	At left rear of engine compartment. See <b>Fig. 1</b> .
X45 (Black, 8 Pin)	At right rear of engine compartment. See <b>Fig. 1</b> .

## GROUND S

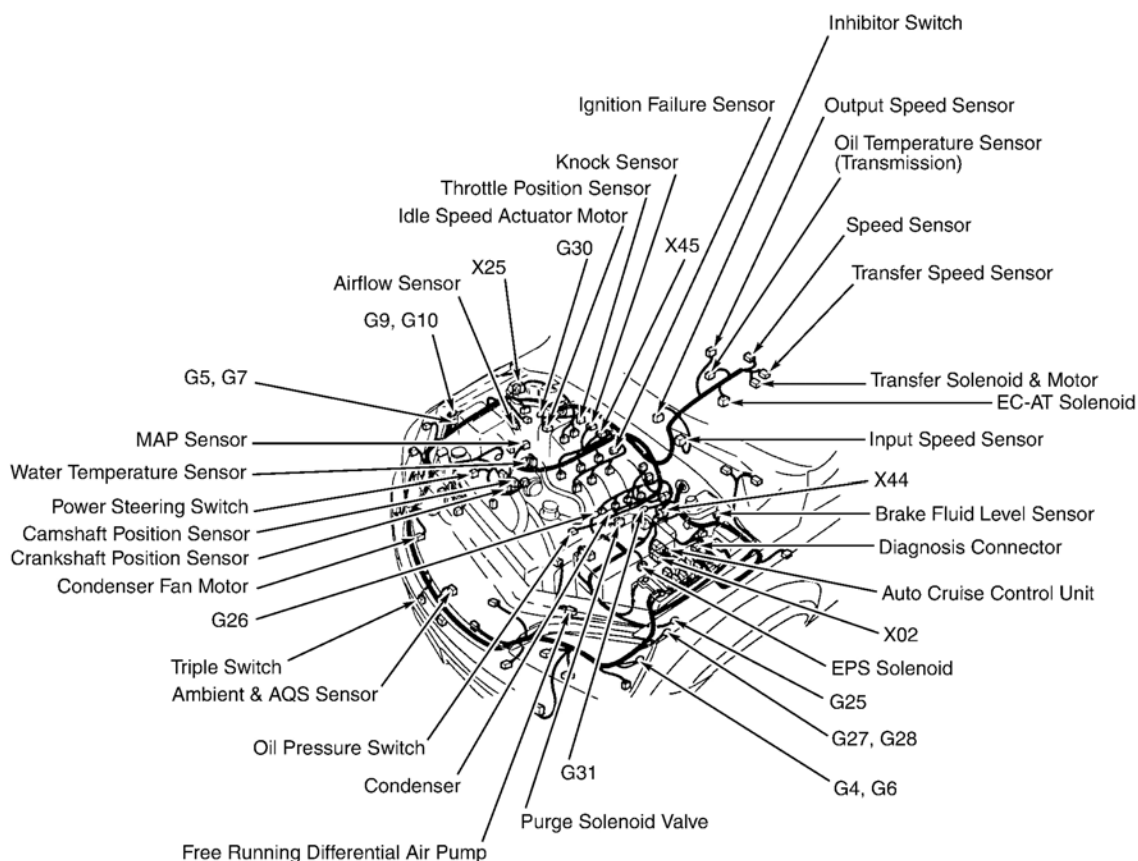
### GROUND S LOCATION

Component	Component Location
G1	Behind left kick panel. See <b>Fig. 3</b> .
G2	Behind right kick panel. See <b>Fig. 3</b> .
G3	Below center console, rear of shift lever assembly. See <b>Fig. 3</b> .
G4	Behind left headlight. See <b>Fig. 1</b> .
G5	At right front of engine compartment, on right shock tower. See <b>Fig. 1</b> .
G6	Behind left headlight. See <b>Fig. 1</b> .
G7	At right side of engine compartment, on right shock tower. See <b>Fig. 1</b> .
G9	At right side of engine compartment, on right shock tower. See <b>Fig. 1</b> .
G10	At right side of engine compartment, on right shock tower. See <b>Fig. 1</b> .
G11	Behind lower left center of dash. See <b>Fig. 2</b> .
G12	Behind lower right center of dash. See <b>Fig. 2</b> .
G13	Behind lower left center of dash. See <b>Fig. 2</b> .
G14	Behind lower right center of dash. See <b>Fig. 2</b> .
G15	Behind lower right side of dash. See <b>Fig. 3</b> .
G16	Behind lower right side of dash. See <b>Fig. 3</b> .
G17	Behind lower right side of dash. See <b>Fig. 3</b> .
G18	Behind lower right side of dash. See <b>Fig. 3</b> .
G19	Behind left taillight assembly. See <b>Fig. 5</b> .
G20	Behind left taillight assembly. See <b>Fig. 5</b> .
G21	Behind right taillight assembly. See <b>Fig. 6</b> .
G22	At right "C" pillar. See <b>Fig. 4</b> .
G23	Behind left taillight assembly. See <b>Fig. 6</b> .

G24	At top right of tailgate. See <b>Fig. 6</b> .
G25	At left front of engine compartment, on left shock tower. See <b>Fig. 1</b> .
G26	At left front of engine. See <b>Fig. 1</b> .
G27	At left front of engine compartment, on left shock tower. See <b>Fig. 1</b> .
G28	At left front of engine compartment, on left shock tower. See <b>Fig. 1</b> .
G30	At right rear corner of engine compartment. See <b>Fig. 1</b> .
G31	At left rear of engine. See <b>Fig. 1</b> .

## COMPONENT LOCATION GRAPHICS

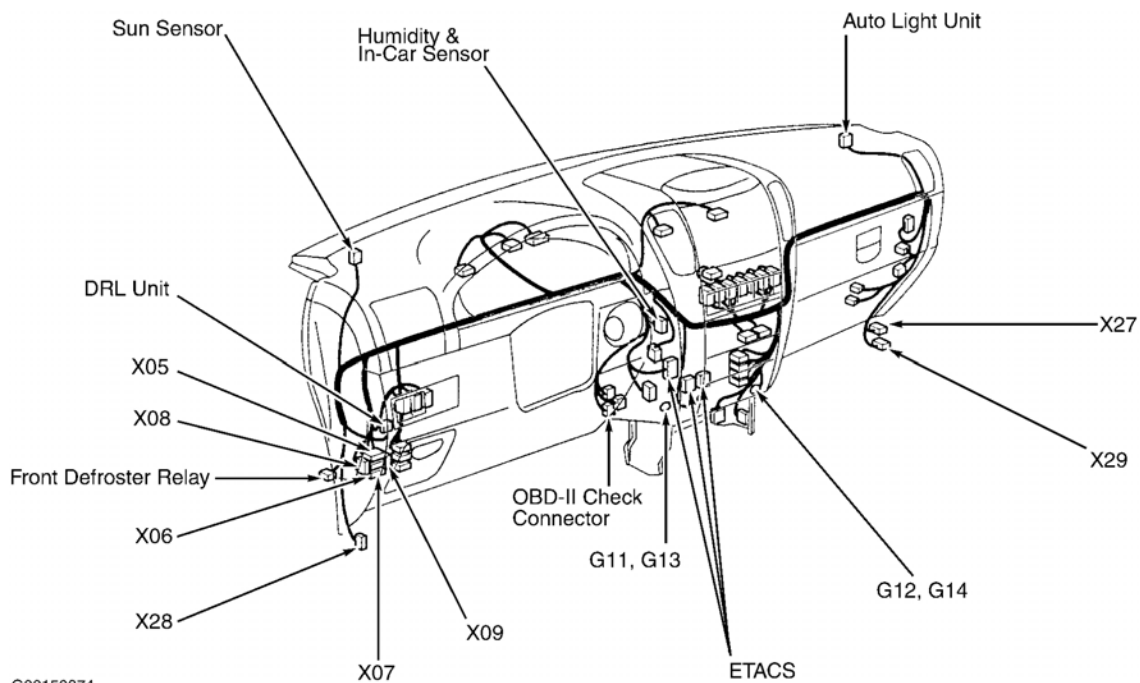
**NOTE:** Figures may show multiple component locations. Refer to appropriate table for proper figure references.



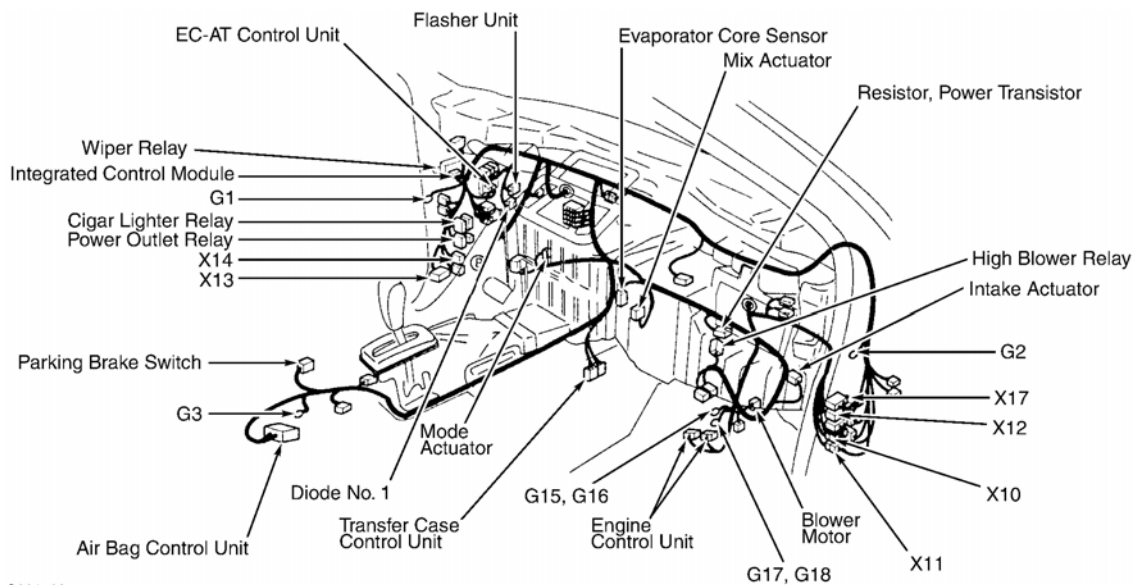
G00150873

**Fig. 1: Engine Compartment**

Courtesy of KIA MOTORS AMERICA, INC.

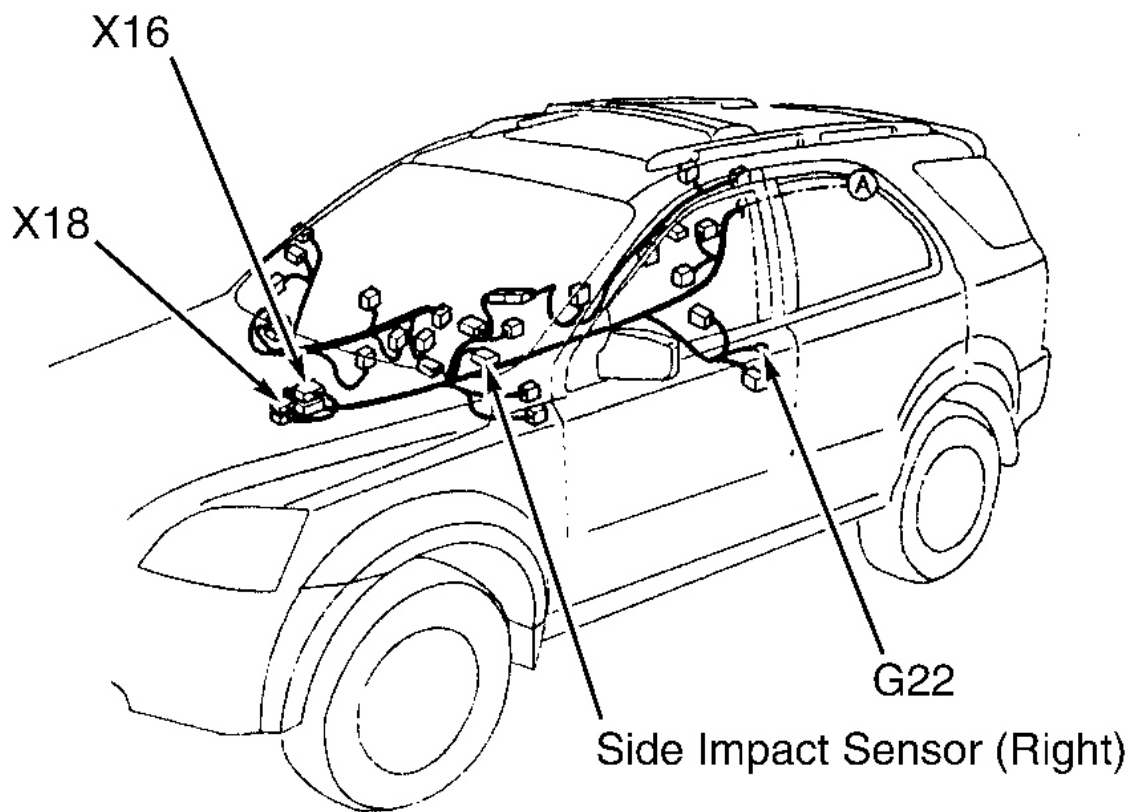


**Fig. 2: Dash**  
Courtesy of KIA MOTORS AMERICA, INC.



**Fig. 3: Dash**  
Courtesy of KIA MOTORS AMERICA, INC.

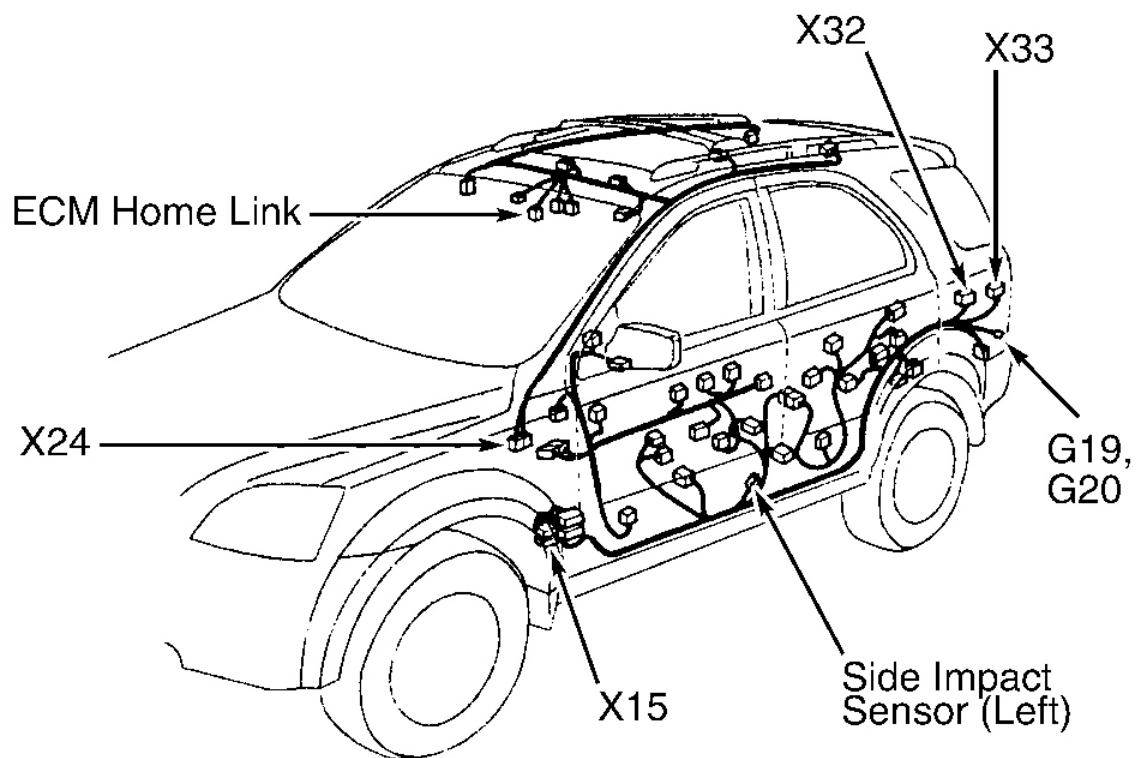




G00150876

**Fig. 4: Left Side Of Vehicle**

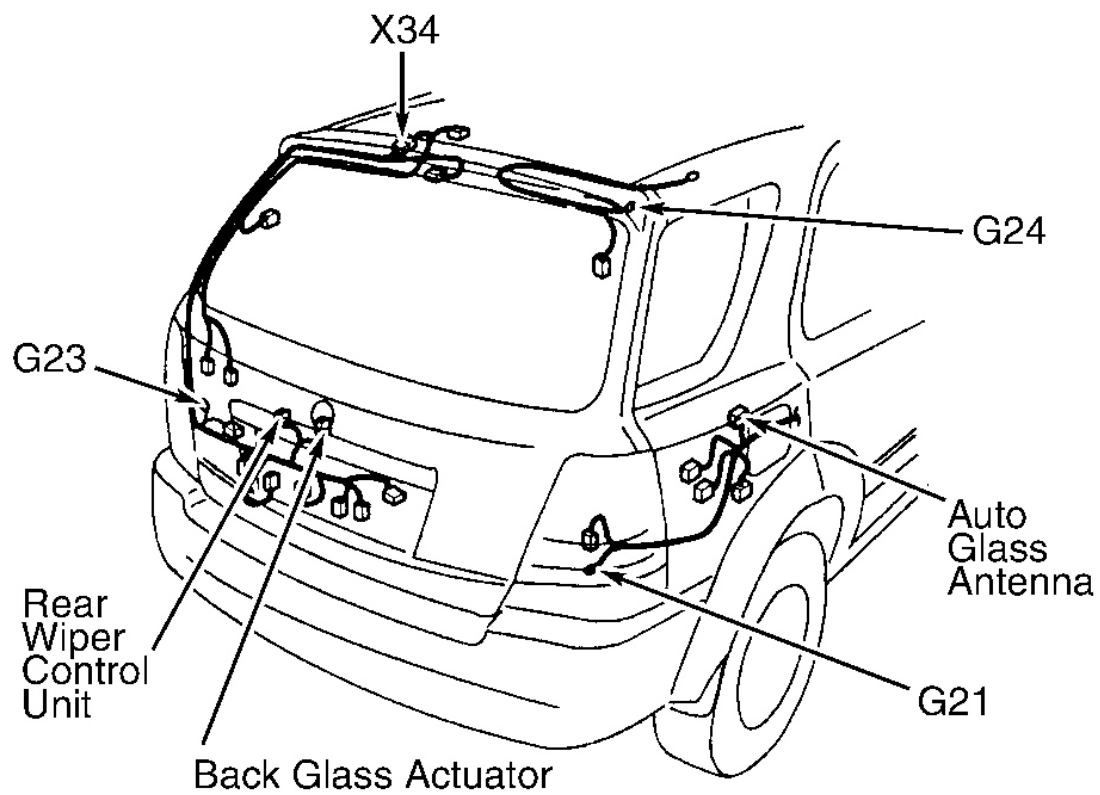
Courtesy of KIA MOTORS AMERICA, INC.



G00150877

**Fig. 5: Left Side Of Vehicle**

Courtesy of KIA MOTORS AMERICA, INC.



G00150878

**Fig. 6: Rear Of Vehicle**

Courtesy of KIA MOTORS AMERICA, INC.