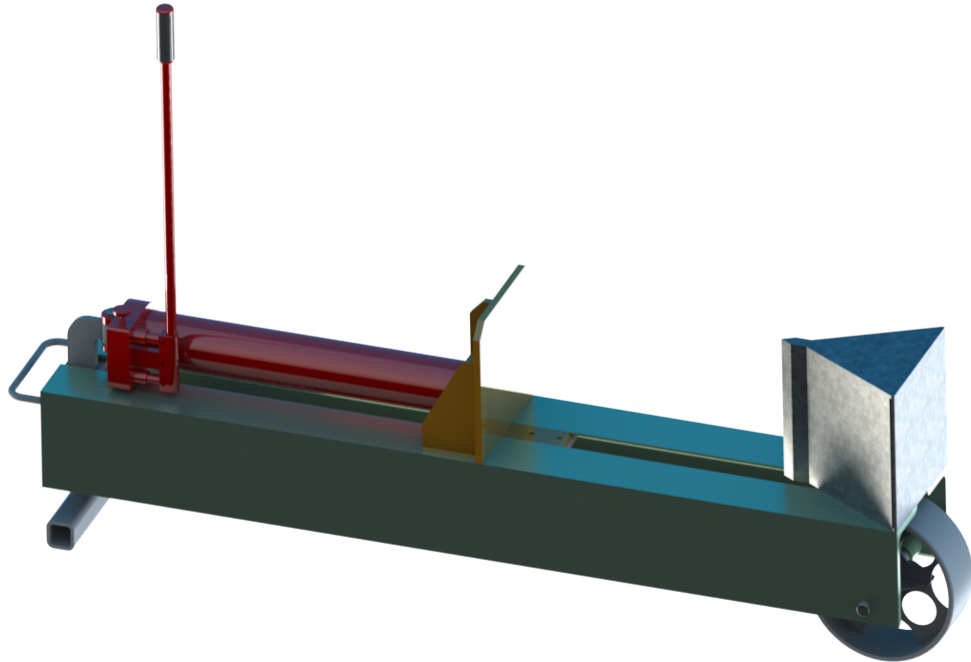


\$29.95 US

# Log Splitter Plans!

By WcWelding.com & Custom-Choppers-Guide.com



**Log splitter**

Copyright Custom-Choppers-Guide.com / WcWelding.com All Rights Reserved

# Log splitter

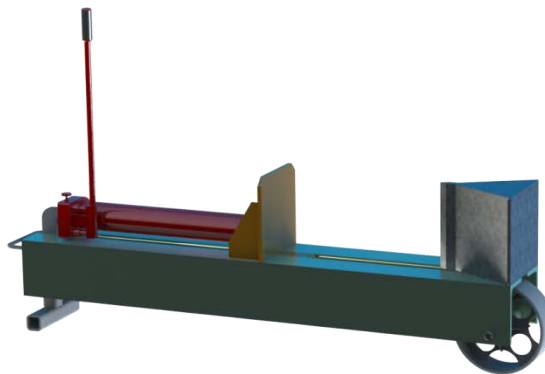
The log splitter plans detail a horizontal log splitter with an 8 ton hydraulic cylinder. It is manually operated.

The main sizes of the device are 68 x 10 x 40 inches.

The maximum log length is 20 inches.

The hydraulic cylinder has a double effect actuation (the pump has no dead stroke) and the main characteristics of this hydraulic cylinder can be found at :  
<http://amzn.to/IL2Mg4>

Of course other cylinders could be used as well.



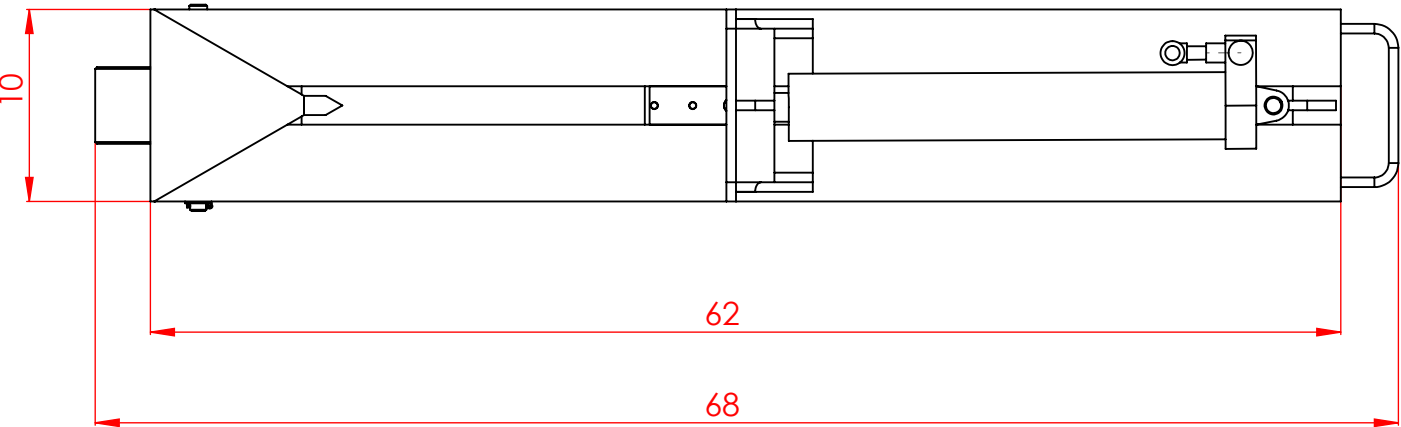
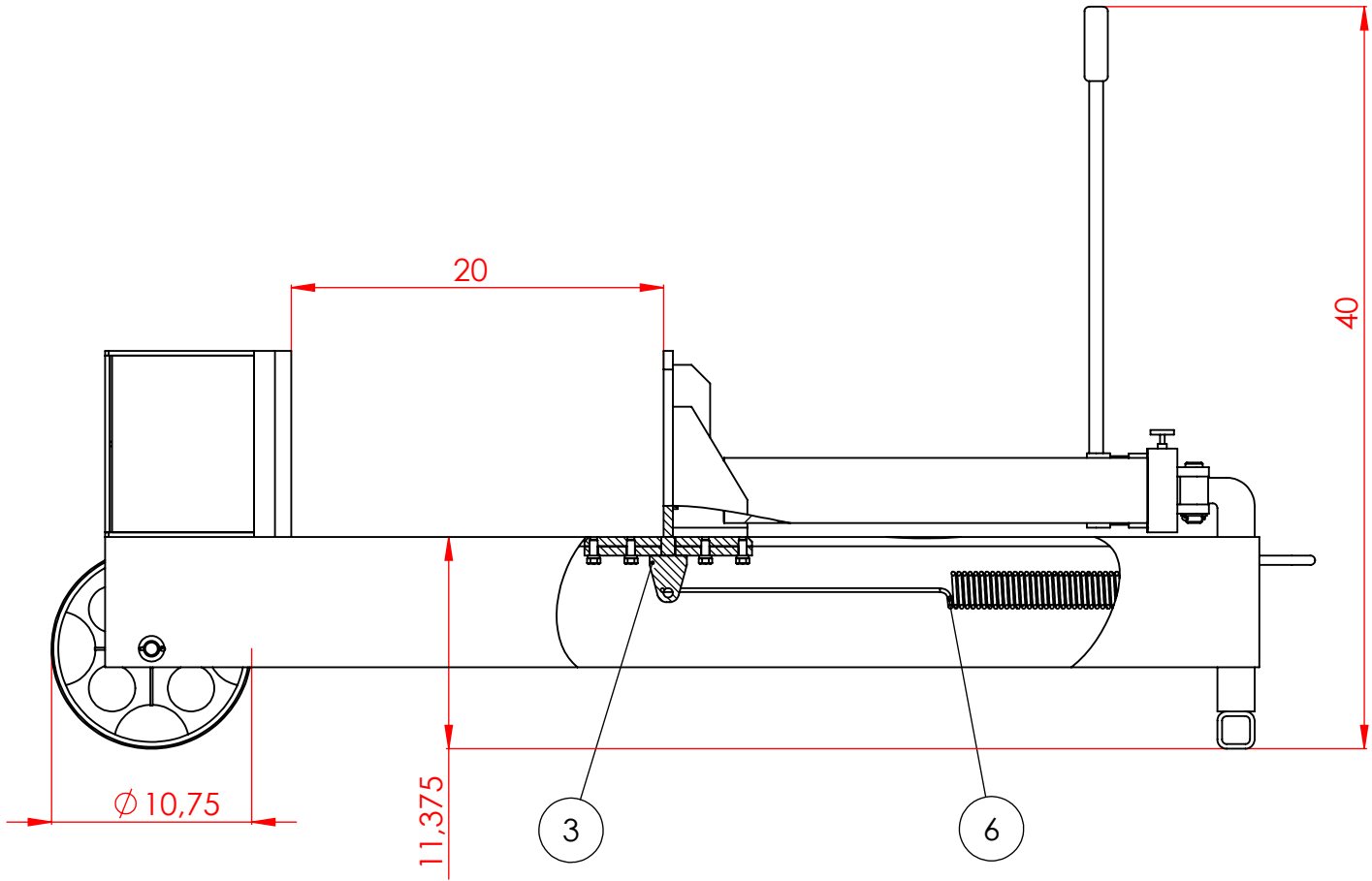
**PROPRIETARY AND CONFIDENTIAL**  
THE INFORMATION CONTAINED IN THIS  
PROJECT IS THE SOLE PROPERTY OF  
Custom-Choppers-Guide.com & WcWelding.com.  
ANY REPRODUCTION IN PART OR AS A WHOLE  
WITHOUT THE WRITTEN PERMISSION OF  
Custom-Choppers-Guide.com & WcWelding.com.  
IS PROHIBITED

D

C

B

A



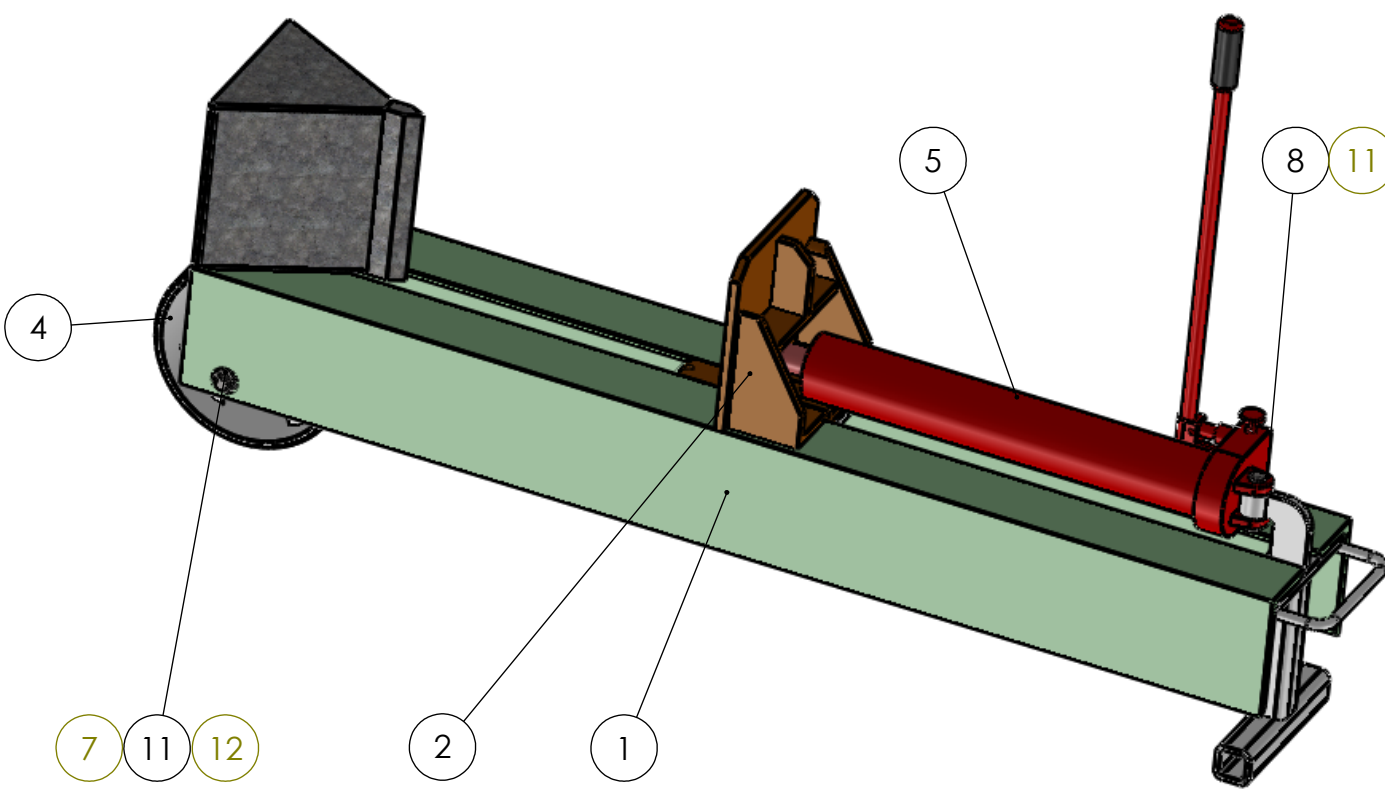
Disclaimer:  
While all attempts have been made to verify the accuracy of these blueprints/plans, Custom-choppers-guide.com & WcWelding.com and its officers, owners, contractors, employees, and webmasters assumes no responsibility for errors, omissions or contradictory interpretation of the subject matter therein. There is no warranty neither written, expressed or implied for damages that may result from the application and interpretation of these drawings.

D

C

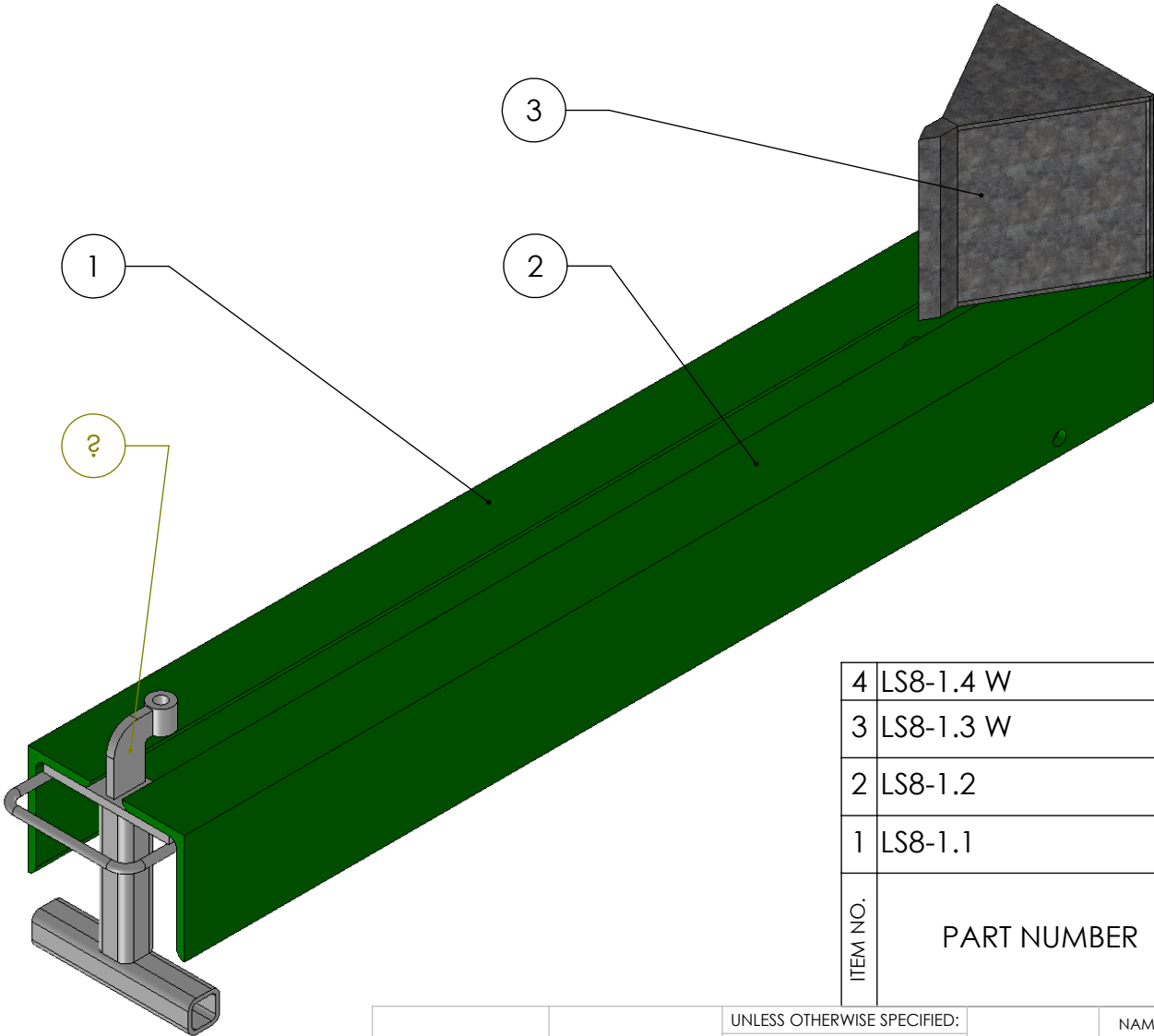
B

A



12	-	cotter pin 0.16x1.5	2	0.01
11	-	Narrow FW 0.75	2	0.003
10	-	screw 7/16-14x1 UNC	4	0.0700
9	-	LW 0.4375	4	0.001
8	-	Clevis Pin 0.75x3	1	0.066
7	-	Clevis Pin 0.75x10,5	1	0.220
6	LE207P08S	spring	1	0.25
5	T30808	long ram double piston hydraulic jack	1	10.117
4	LS8-4.0W	wheel	1	16.1577
3	LS8-3.0W	bottom plate	1	7.764
2	LS8-2.0 W	pusher	1	29.69
1	LS8-1.0	Frame	1	230.540
PART NUMBER		DESCRIPTION	QTY.	Weight

UNLESS OTHERWISE SPECIFIED:  DIMENSIONS are in INCHES As SME Y14.5-2009 GD&T are in SI		DRAWN	NAME	DATE	TITLE:  log splitter	
		CHECKED				
		ENG APPR.				
		MFG APPR.				
GD&T mk ISO 2768		Q.A.			SIZE <b>B</b>	
INTERPRET GEOMETRIC TOLERANCING PER:		COMMENTS: -Sharp edges will be cheffered				
MATERIAL:					DWG. NO. <b>LSW8-0</b>	REV
NEXT ASSY	USED ON	FINISH: ✓/✓/✓				
APPLICATION		SCALE: 1:10				
WEIGHT: 295.114 lbs				SHEET 1 OF 1		



4	LS8-1.4 W	Foot frame	1	13.857
3	LS8-1.3 W	Splitter	1	32.74
2	LS8-1.2	R girder frame7x4x0,5	1	91.970
1	LS8-1.1	L girder frame 7x4x0.5	1	91.970
ITEM NO.	PART NUMBER	DESCRIPTION	QTY.	Weight

Disclaimer:  
While all attempts have been made to verify the accuracy of these blueprints/plans, Custom-choppers-guide.com & WcWelding.com and its officers, owners, contractors, employees, and webmasters assumes no responsibility for errors, omissions or contradictory interpretation of the subject matter therein. There is no warranty neither written, expressed or implied for damages that may result from the application and interpretation of these drawings.

		UNLESS OTHERWISE SPECIFIED:		NAME	DATE		
		DIMENSIONS are in INCHES As SME Y14.5-2009 GD&T are in SI		DRAWN			
		DG&T mk-ISO 2768		CHECKED		TITLE:	
		INTERPRET GEOMETRIC TOLERANCING PER:		ENG APPR.		Frame	
		MATERIAL: DIN U 80x45		MFG APPR.			
		FINISH:		Q.A.			
NEXT ASSY		USED ON		COMMENTS:		SIZE	DWG. NO.
				- Sharp edges will be chamfered - Continuous general welding s = thinnest plate thickness		A	LS8-1.0
APPLICATION		SCALE: 1:20				WEIGHT: 230.540 lbs	REV
						SHEET 1 OF 1	

5

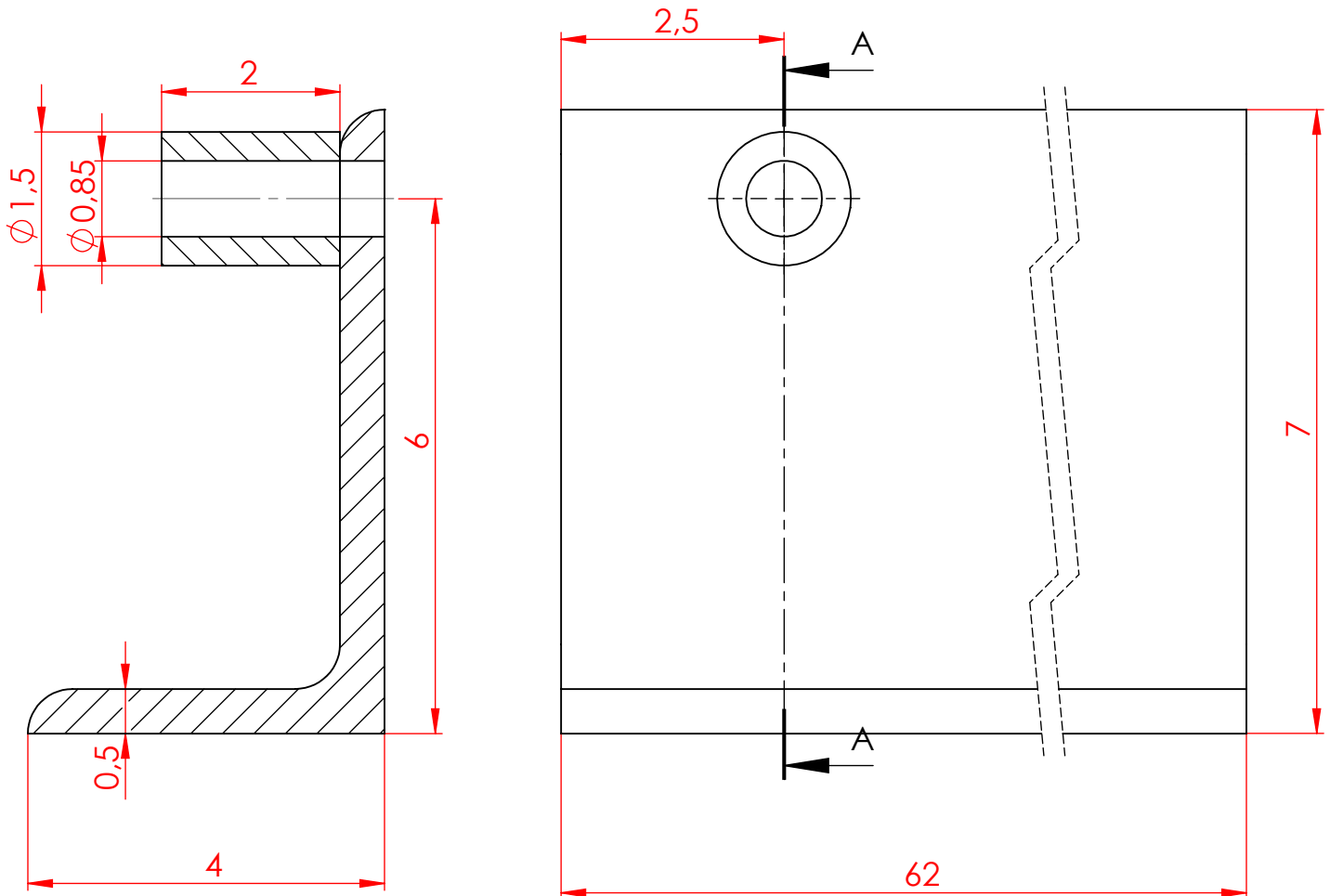
5

4

3

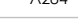
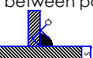
2

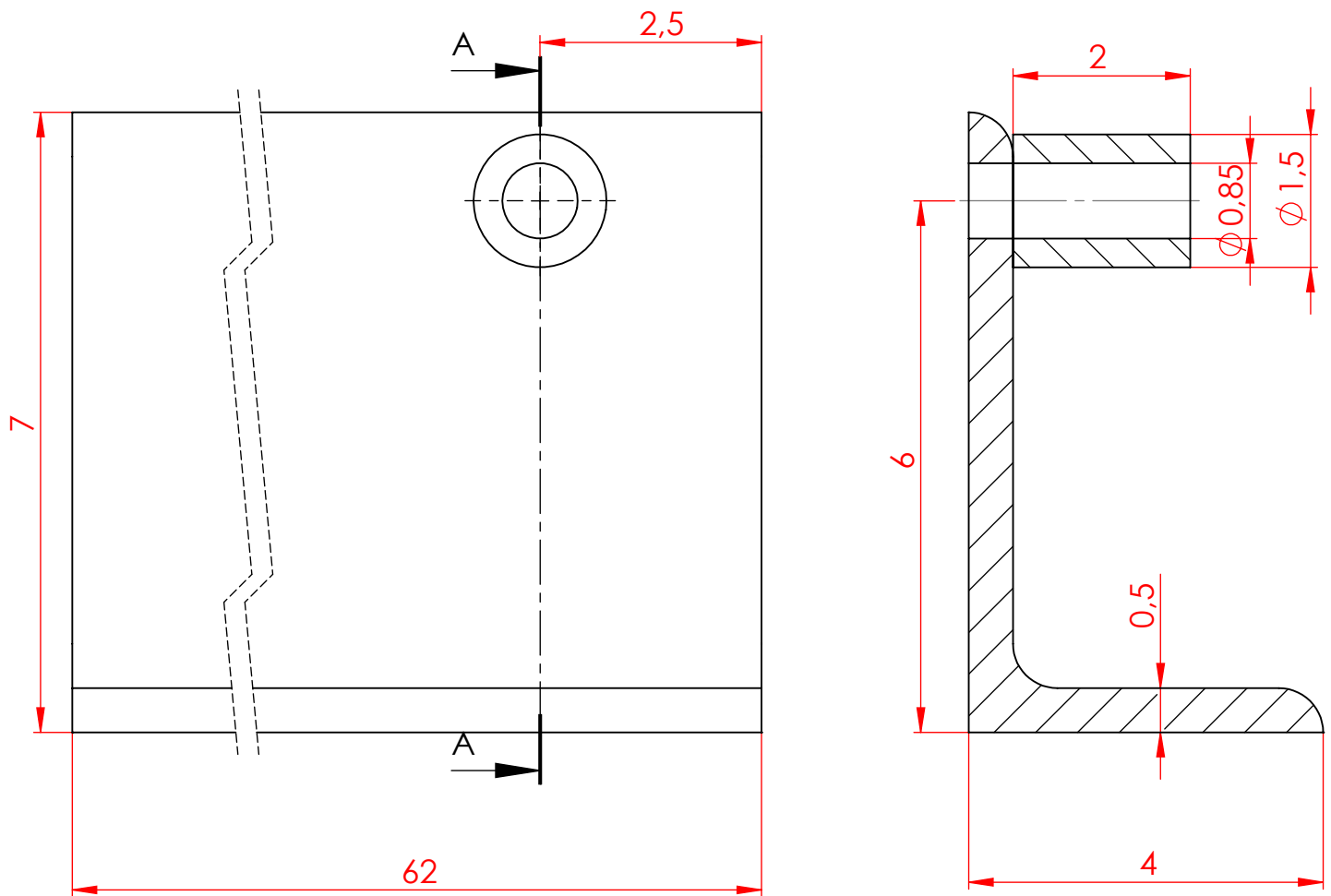
1



SECTION A-A  
SCALE 1 : 2

Disclaimer:  
While all attempts have been made to verify the accuracy of these blueprints/plans, Custom-choppers-guide.com & WcWelding.com and its officers, owners, contractors, employees, and webmasters assumes no responsibility for errors, omissions or contradictory interpretation of the subject matter therein. There is no warranty neither written, expressed or implied for damages that may result from the application and interpretation of these drawings.

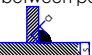
UNLESS OTHERWISE SPECIFIED:		NAME	DATE			
As ASME Y14.5-2009 GD&T are in SI		DRAWN		L girder frame 7x4x0.5		
		CHECKED				
		ENG APPR.				
		MFG APPR.				
MATERIAL	A284	Q.A.		COMMENTS: - Sharp edges will be cheffered - Continuous general welding between part/corner $\alpha=0.75$ s		
FINISH	6.3 					
DO NOT SCALE DRAWING				SIZE <b>A</b>	DWG. NO. <b>LS8-1.1</b>	REV.
		SCALE: 1:20		WEIGHT: 91.970 lbs		SHEET 1 OF 1

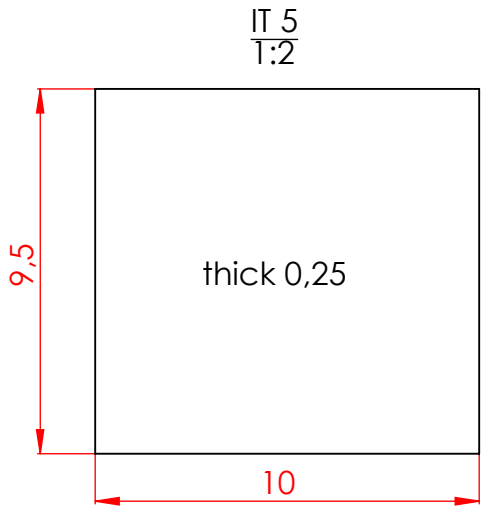
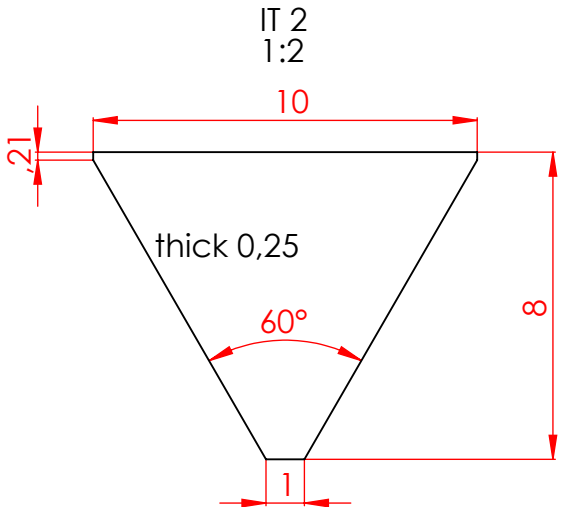
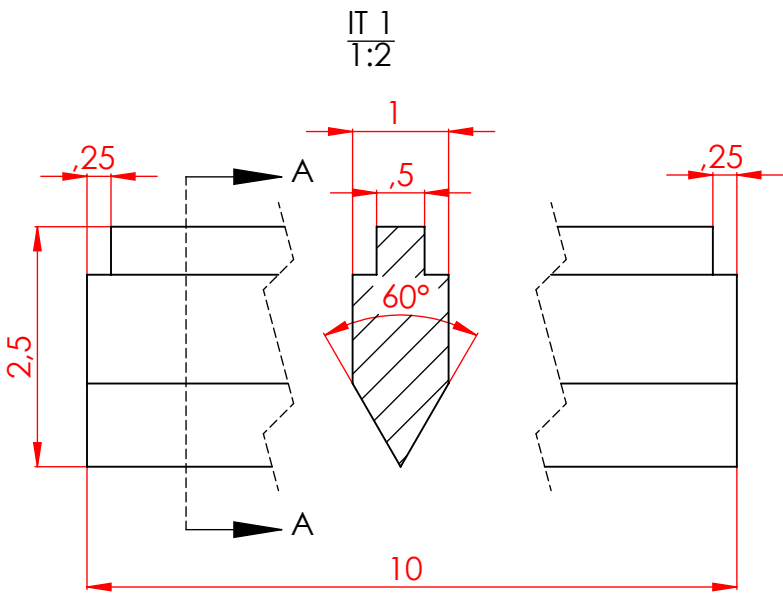
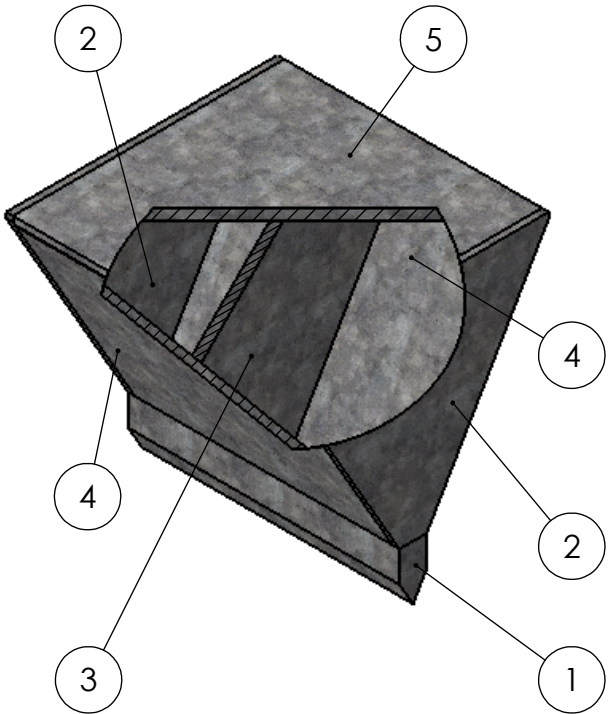
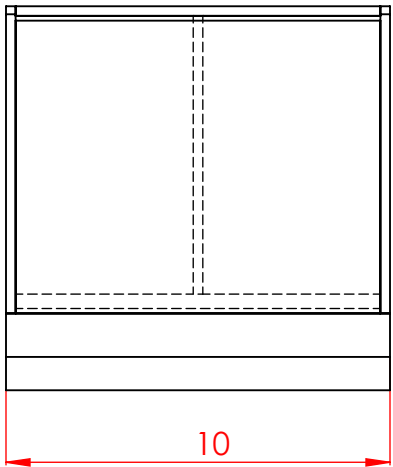
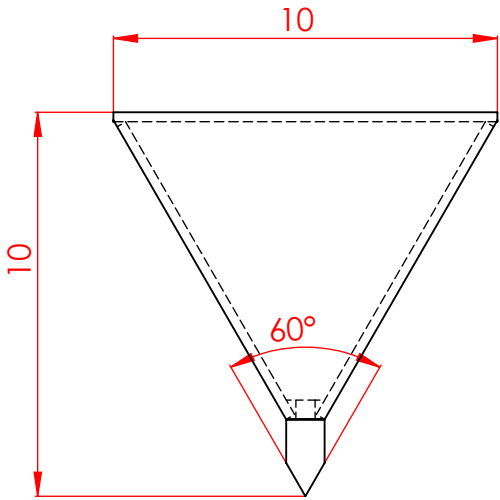


SECTION A-A  
SCALE 1 : 2

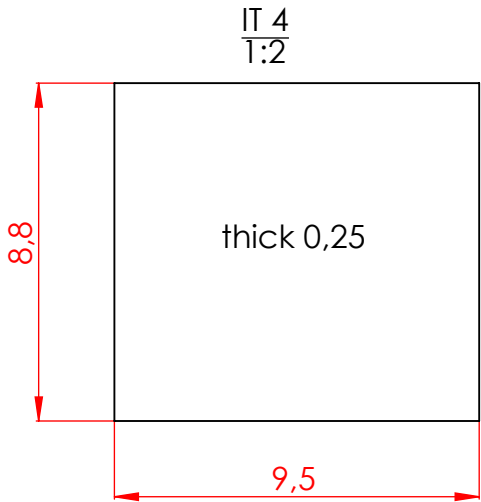
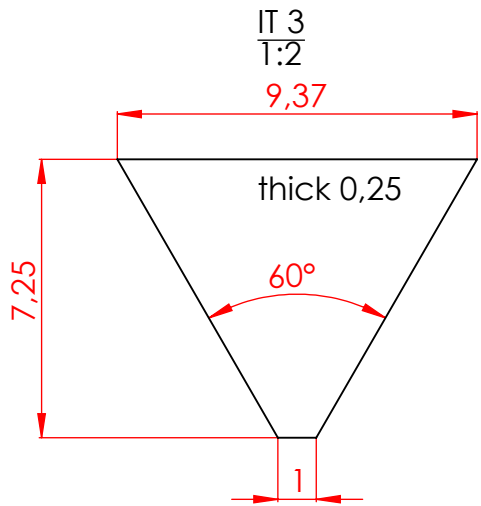


Disclaimer:  
While all attempts have been made to verify the accuracy of these blueprints/plans, Custom-choppers-guide.com & Wcwelding.com and its officers, owners, contractors, employees, and webmasters assumes no responsibility for errors, omissions or contradictory interpretation of the subject matter therein. There is no warranty neither written, expressed or implied for damages that may result from the application and interpretation of these drawings.




UNLESS OTHERWISE SPECIFIED:		NAME	DATE			
As ASME Y14.5-2009 GD&T are in SI		DRAWN		R girder frame7x4x0,5		
		CHECKED				
		ENG APPR.				
		MFG APPR.				
MATERIAL	A284	Q.A.				
FINISH	6.3 √/√/	COMMENTS: - Sharp edges will be cheffered - Continuous general welding between part/corner α=0.75 s		SIZE	DWG. NO.	REV.
DO NOT SCALE DRAWING		 s = thinnest plate thickness		A LS8-1.2		
				SCALE:1:20	WEIGHT: 91.970 lbs	SHEET 1 OF 1



5	Cap	1	A284	6.74
4	Sidewall	2	A284	5.93
3	Partition	1	A284	2.67
2	Wall	2	A284	3.19
1	Axe	1	A 633	5.12
ITEM NO.	DESCRIPTION	QTY.	Material	Weight



Disclaimer:  
While all attempts have been made to verify the accuracy of these blueprints/plans, Custom-choppers-guide.com & WcWelding.com and its officers, owners, contractors, employees, and webmasters assumes no responsibility for errors, omissions or contradictory interpretation of the subject matter therein. There is no warranty neither written, expressed or implied for damages that may result from the application and interpretation of these drawings.

		UNLESS OTHERWISE SPECIFIED:	NAME	DATE	TITLE:  Splitter		
		DIMENSIONS are in INCHES As SME Y14.5-2009 GD&T are in SI	DRAWN				
		GD&T mk ISO 2768	CHECKED				
			ENG APPR.				
		INTERPRET GEOMETRIC TOLERANCING PER:	MFG APPR.		Q.A.		
		MATERIAL:	COMMENTS: -Sharp edges will be cheffered - Continuous general welding between part/corner a=0.75 s				
NEXT ASSY	USED ON	FINISH: 	 s = thinnest plate thickness		SIZE <b>B</b>	DWG. NO. <b>LS8-1.3 W</b>	REV
APPLICATION		SCALE: 1:5			WEIGHT: 32.74 lbs		SHEET 1 OF 1



D

C

B

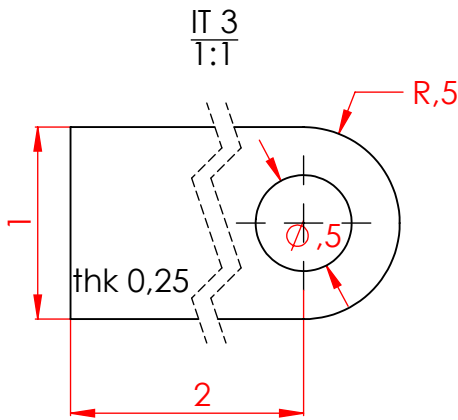
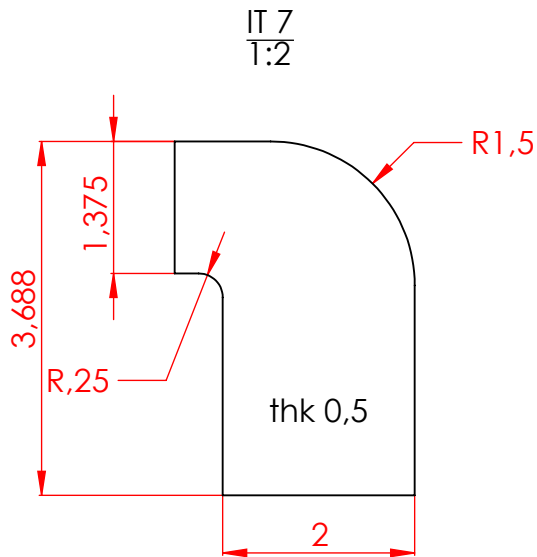
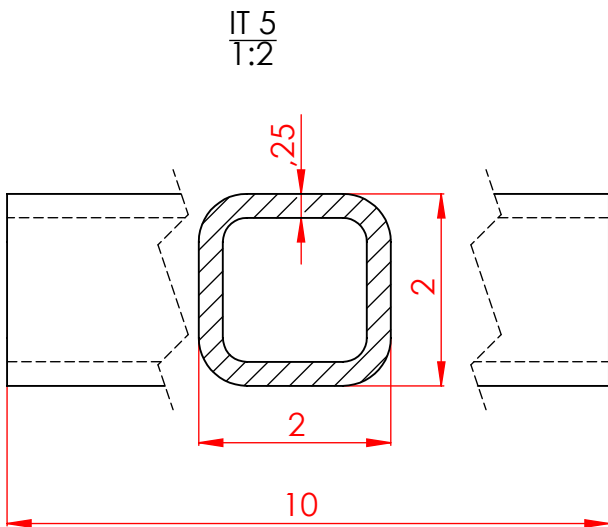
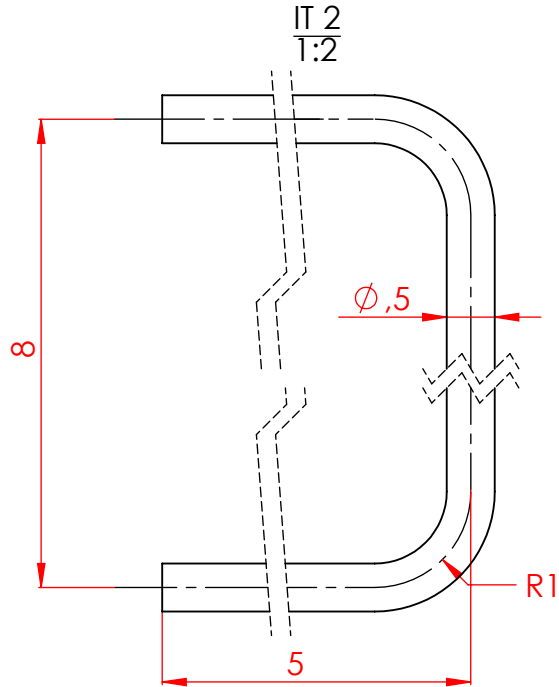
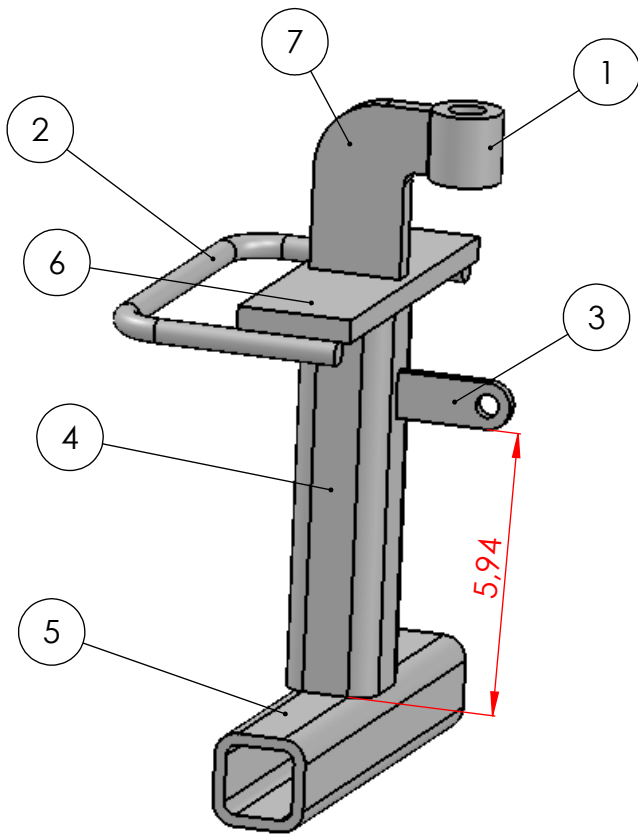
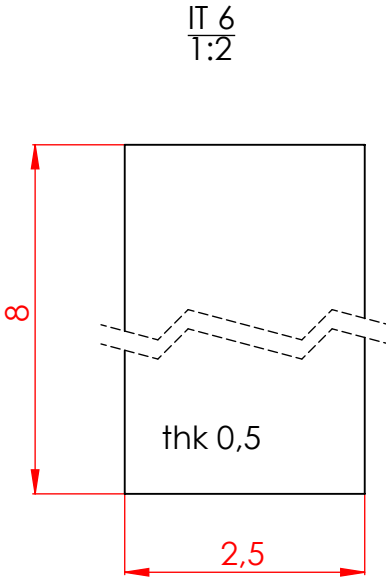
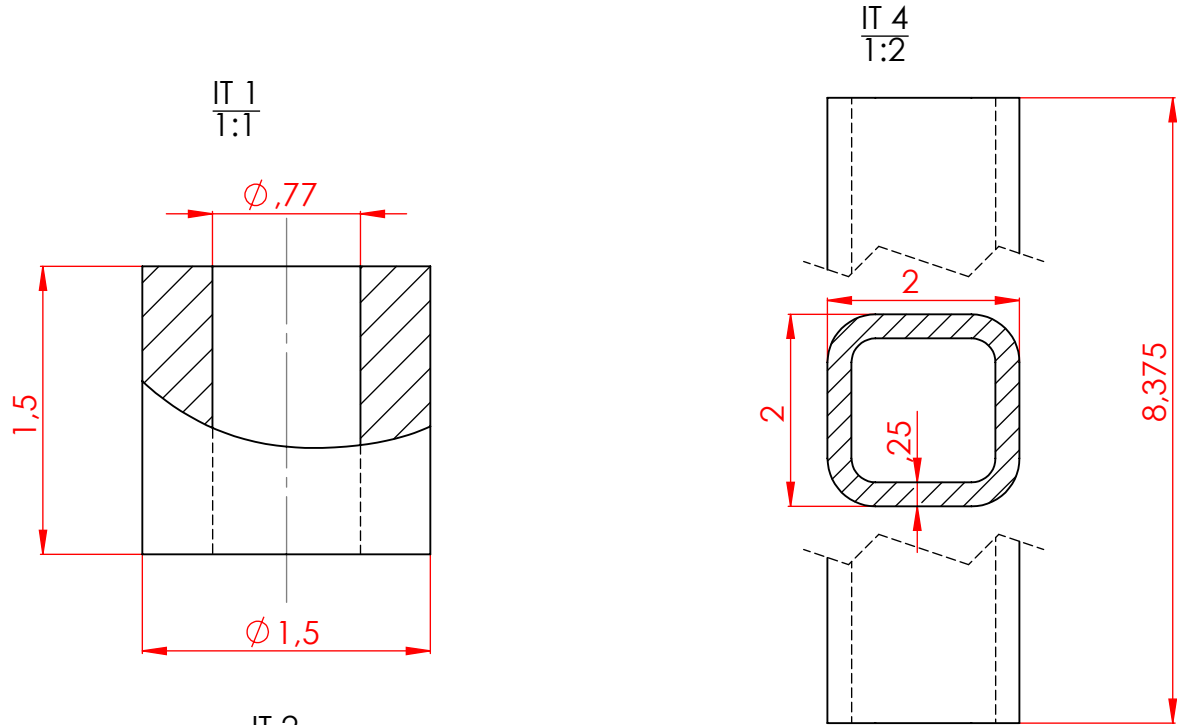
A

D

C

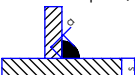
B

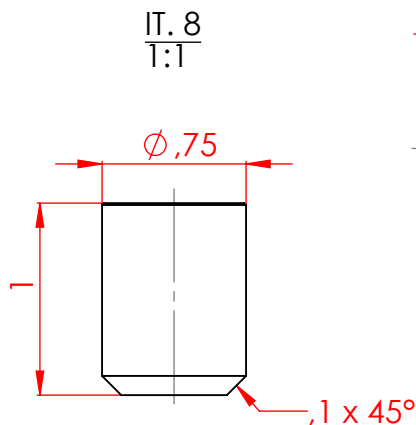
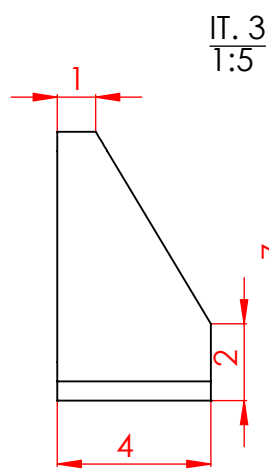
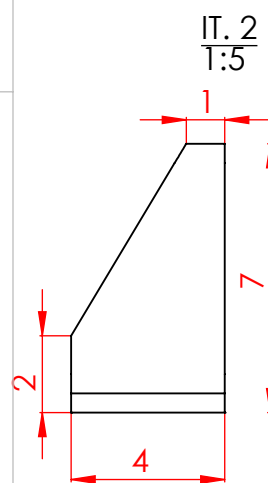
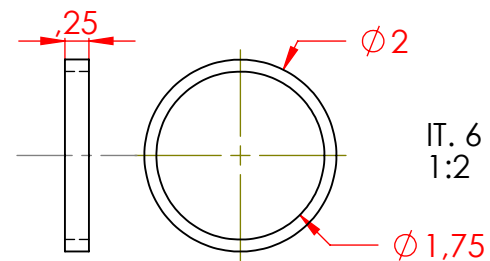
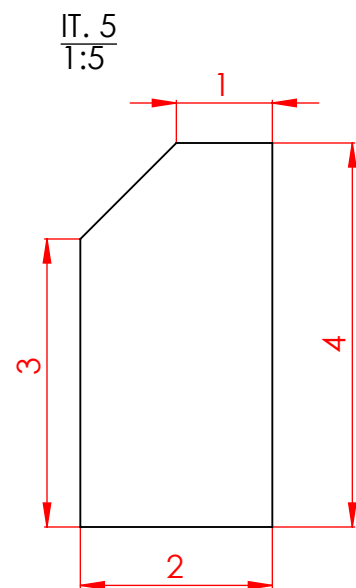
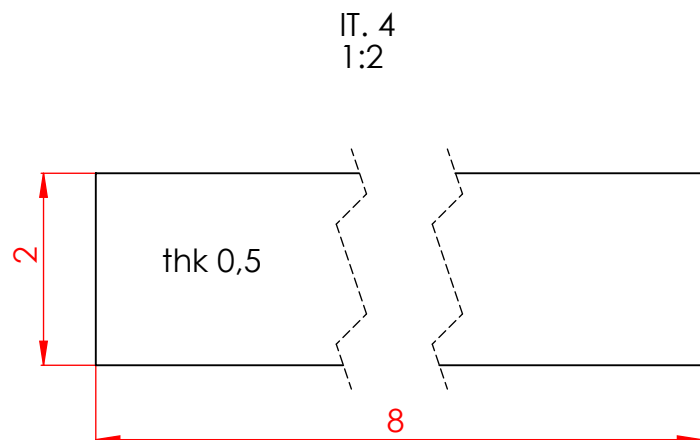
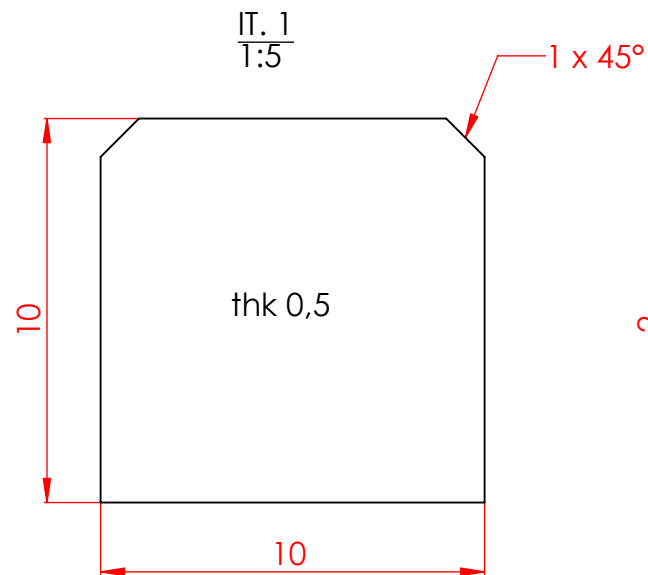
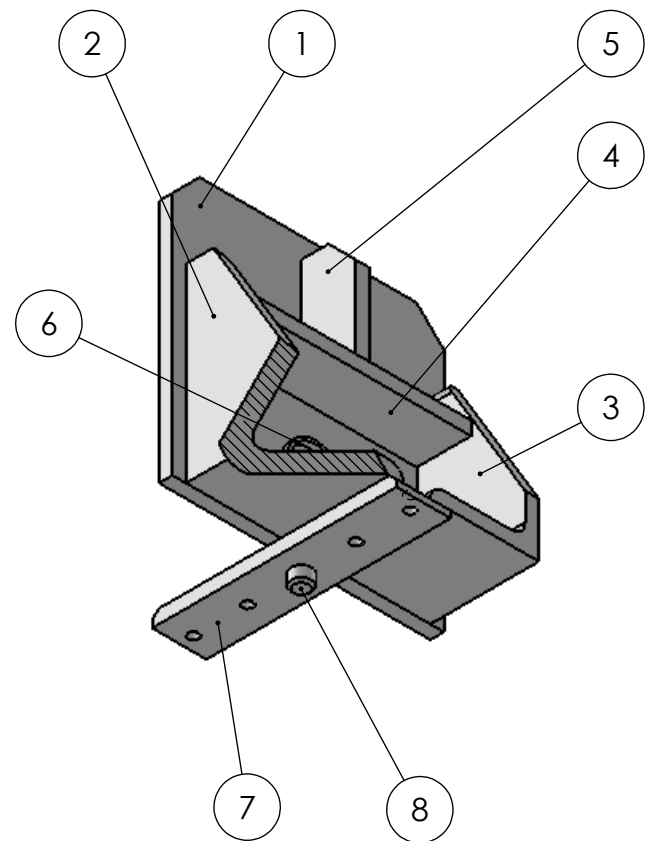
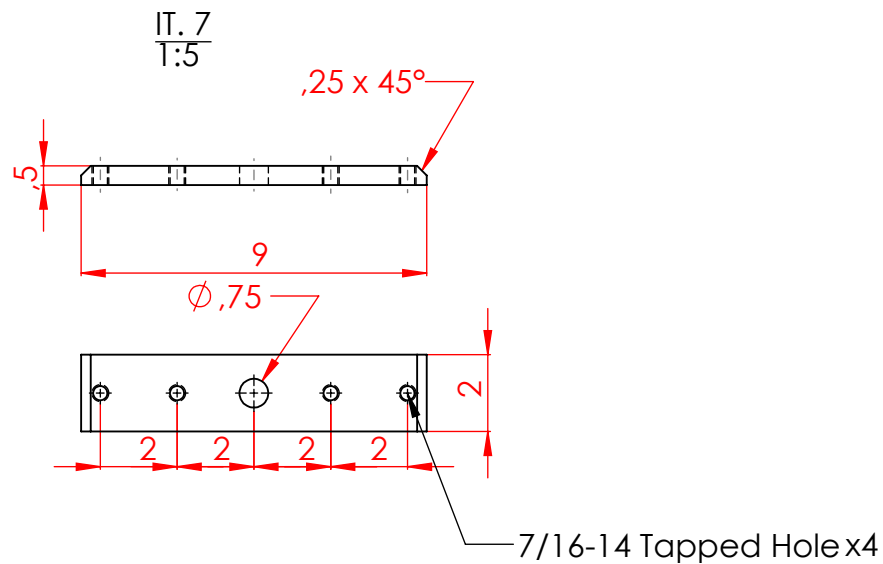
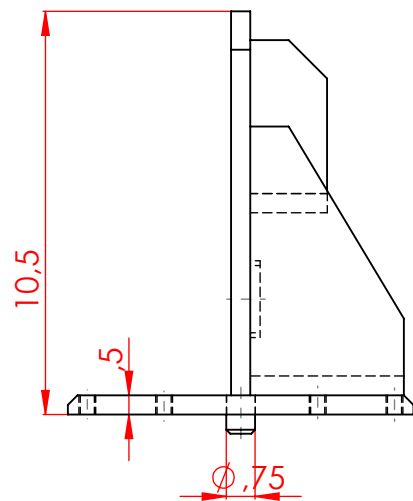
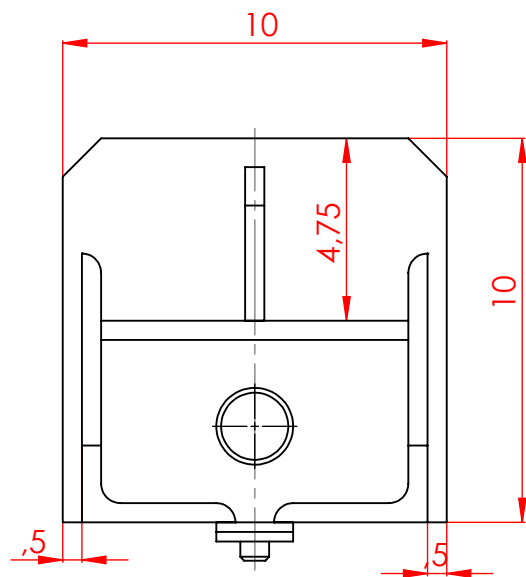
A



Disclaimer:  
While all attempts have been made to verify the accuracy of these blueprints/plans, Custom-choppers-guide.com & WcWelding.com and its officers, owners, contractors, employees, and webmasters assumes no responsibility for errors, omissions or contradictory interpretation of the subject matter therein. There is no warranty neither written, expressed or implied for damages that may result from the application and interpretation of these drawings.

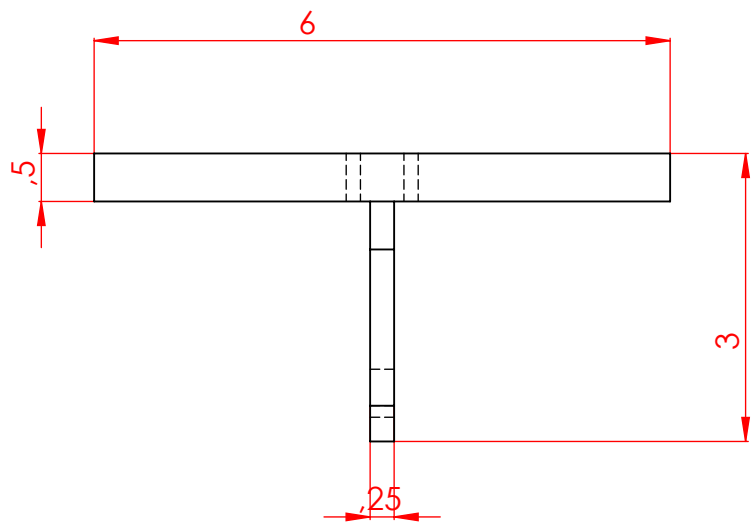
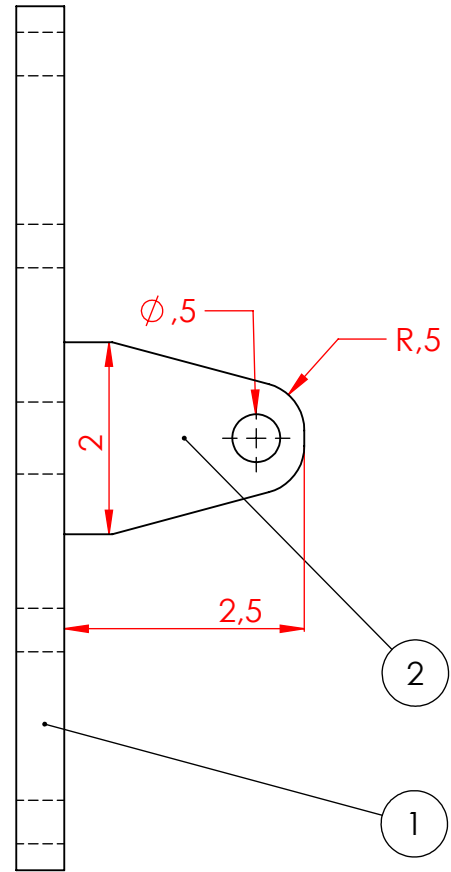
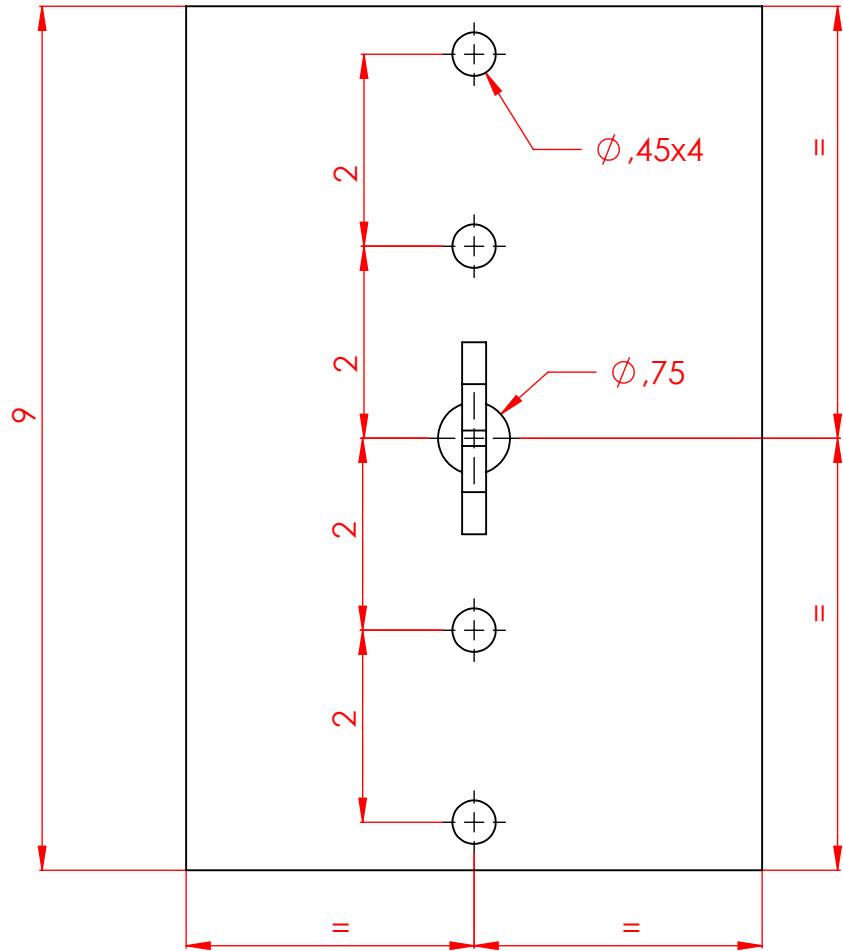
7	rib	1	488.38
6	board support	1	1286.38
5	base	1	4.51
4	foot	1	3.77
3	support spring	1	0.16
2	handle	1	0.95
1	nut	1	0.55
ITEM NO.	DESCRIPTION	QTY.	Weight

		UNLESS OTHERWISE SPECIFIED:	NAME	DATE	TITLE:  foot frame		
		DIMENSIONS are in INCHES As SME Y14.5-2009 GD&T are in SI	DRAWN				
		GD&T mk ISO 2768	CHECKED				
			ENG APPR.				
			MFG APPR.		COMMENTS: - Sharp edges will be cheffered - Continuous general welding between part/corner a=0.75 s		
		INTERPRET GEOMETRIC TOLERANCING PER:	Q.A.				
		MATERIAL:					
NEXT ASSY	USED ON	FINISH:			SIZE <b>B</b>	DWG. NO. <b>LS8-1.4</b>	REV
APPLICATION		SCALE:			1:5	WEIGHT: 13.8573 lbs	



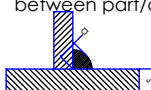

Disclaimer:  
While all attempts have been made to verify the accuracy of these blueprints/plans, Custom-choppers-guide.com & WcWelding.com and its officers, owners, contractors, employees, and webmasters assumes no responsibility for errors, omissions or contradictory interpretation of the subject matter therein. There is no warranty neither written, expressed or implied for damages that may result from the application and interpretation of these drawings.

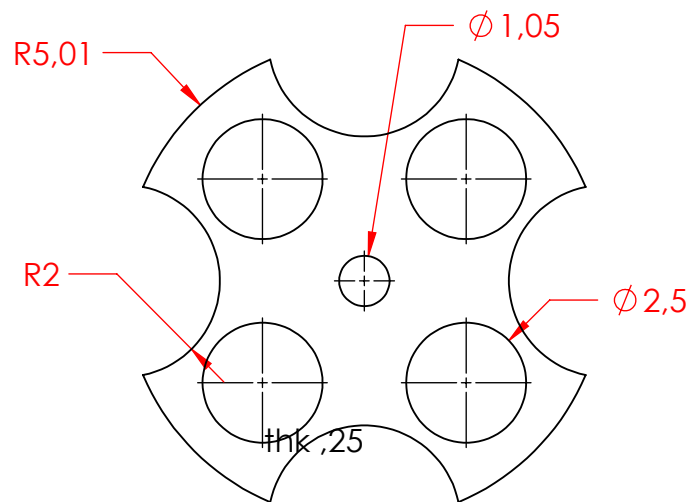
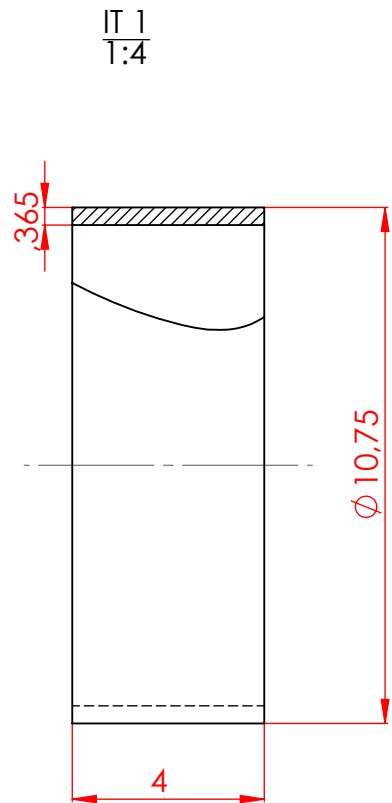
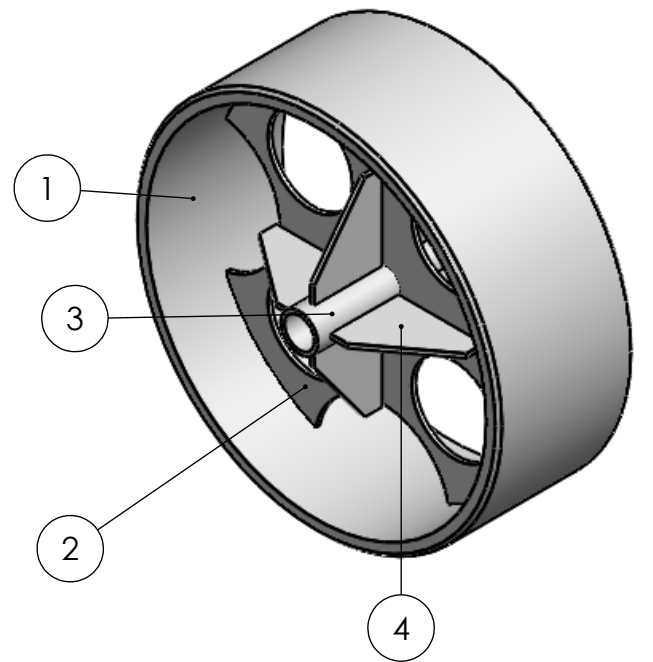
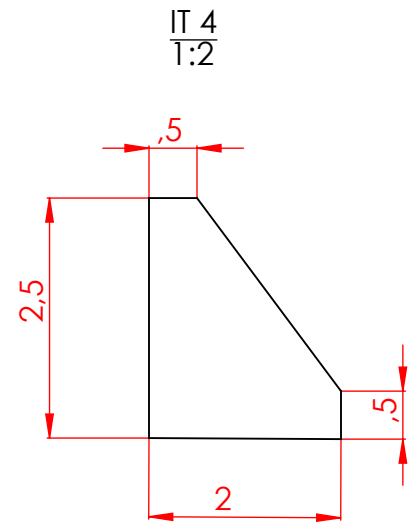
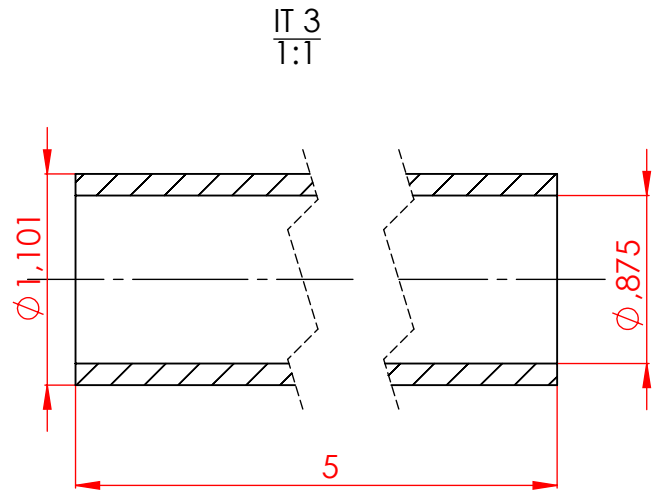
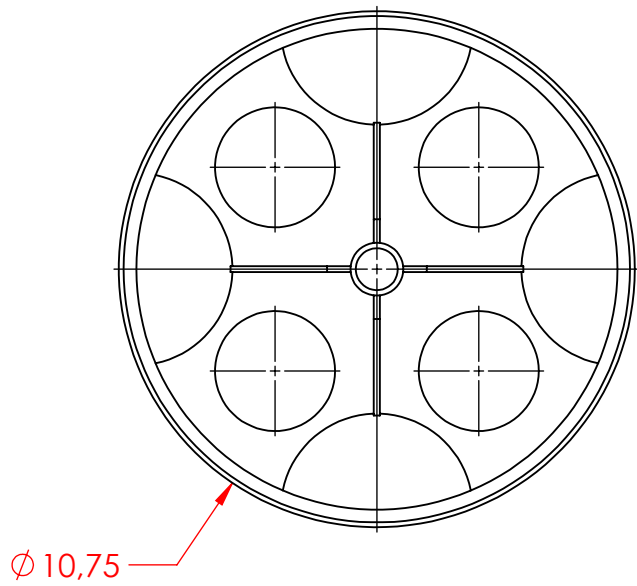
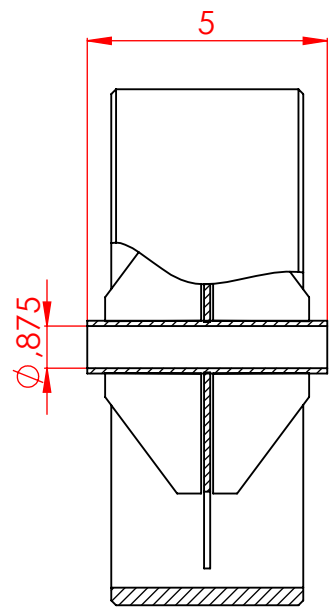
		UNLESS OTHERWISE SPECIFIED:			
		DIMENSIONS are in INCHES As SME Y14.5-2009 GD&T are in SI		DRAWN	
		GD&T mk ISO 2768		CHECKED	
		INTERPRET GEOMETRIC TOLERANCING PER:		ENG APPR.	
		MATERIAL: A284		MFG APPR.	
		FINISH: ✓/✓/✓		Q.A.	
		SCALE: 1:5		COMMENTS: -Sharp edges will be cheffered - Continuous general welding between part/corner a=0.75 s s = thinnest plate thickness	
NEXT ASSY	USED ON			PART NUMBER	DESCRIPTION
APPLICATION				QTY.	Weight
				TITLE: pusher	
				SIZE B	DWG. NO. LS8-2.0 W
				REV	
				WEIGHT: 29.69 lbs	
				SHEET 1 OF 1	



Disclaimer:  
While all attempts have been made to verify the accuracy of these blueprints/plans, Custom-choppers-guide.com & WcWelding.com and its officers, owners, contractors, employees, and webmasters assumes no responsibility for errors, omissions or contradictory interpretation of the subject matter therein. There is no warranty neither written, expressed or implied for damages that may result from the application and interpretation of these drawings.

2	-	spring support	1	0.26
1	-	plate	1	7.50
ITEM NO.	PART NUMBER	DESCRIPTION	QTY.	Weight

		UNLESS OTHERWISE SPECIFIED:  DIMENSIONS are in INCHES As SME Y14.5-2009 GD&T are in SI  GD&T mk ISO 2768	DRAWN	NAME	DATE	TITLE:  bottom plate		
			CHECKED					
			ENG APPR.					
			MFG APPR.					
		INTERPRET GEOMETRIC TOLERANCING PER:	Q.A.			SIZE <b>B</b>		
		MATERIAL: A284	COMMENTS: -Sharp edges will be cheffered - Continuous general welding between part/corner $\alpha=0.75 s$ 					
NEXT ASSY	USED ON	FINISH: 				DWG. NO. <b>LS8-3.0W</b>		REV
APPLICATION		SCALE: 1:2				WEIGHT: 7.764 lbs		SHEET 1 OF 1



4		gusset	8	
3		hub	1	
2		diaphragm	1	
1		rim	1	
ITEM NO.	PART NUMBER	DESCRIPTION	QTY.	Weight

		UNLESS OTHERWISE SPECIFIED:		NAME	DATE
		DIMENSIONS are in INCHES As SME Y14.5-2009 GD&T are in SI		DRAWN	
		GD&T mk ISO 2768		CHECKED	
		INTERPRET GEOMETRIC TOLERANCING PER:		ENG APPR.	
		MATERIAL: A284		MFG APPR.	
		FINISH: ✓/✓/✓		Q.A.	
		SCALE: 1:5		COMMENTS: - Sharp edges will be cheffered - Continuous general welding between part/corner a=0.75 s s = thinnest plate thickness	
NEXT ASSY		USED ON		TITLE: wheel	
APPLICATION				SIZE B	DWG. NO. LS8-4.0W
				REV	
				WEIGHT: 16.1577 lbs	
				SHEET 1 OF 1	



Disclaimer:  
While all attempts have been made to verify the accuracy of these blueprints/plans, Custom-choppers-guide.com & WcWelding.com and its officers, owners, contractors, employees, and webmasters assumes no responsibility for errors, omissions or contradictory interpretation of the subject matter therein. There is no warranty neither written, expressed or implied for damages that may result from the application and interpretation of these drawings.